

The Chelsea Standard

ONE HUNDRED FOURTH YEAR—No. 17

11 Pages This Week

Plus Supplement

CHELSEA, MICHIGAN, THURSDAY, OCTOBER 11, 1973

15c per copy

SUBSCRIPTION: \$4.00 PER YEAR

QUOTE

"An idle fan is a kind of monster in the creation. All nature is busy about him; every animal he sees reproaches him."
Joseph Addison.

Bulldog Grid Team Dumped, 39-6, By Novi

In a disappointing game last Friday the Bulldogs bowed to the Novi Wildcats, 39-6.

Two years after last season's 49-yard opening kick-off, the Bulldogs of Novi ran 34 yards to score the first points of the game. Brown also kicked the extra point making the score, 7-0. Novi, after only a few minutes of play, by the end of the first quarter, Dave Brown, apparently a one-man show, had thrown a 49-yard touchdown pass to Mike Riley and then added Novi's extra point by himself, putting the score at 14-0.

The second quarter continued much the same as the first. Novi kicked a 15-yard field goal and followed up with a 22-yard touchdown run and again it was Dave Brown who not only ran the TD, but also kicked the extra point. At half time Novi held a commanding 24-0 lead.

After returning to the field a bit more enthusiastic, the only bright spot of Chelsea's game occurred just into the third quarter when Chuck Foytik galloped 41 yards for the Bulldogs' only touchdown of the evening. But an attempted run for two extra points was foiled and the tally was 24-6.

Again the Wildcats ran 14 yards for a touchdown with the extra point no good, making the score, 30-6. Before Chelsea could manage to get out of the third quarter.

Rockwell Plant Hosts Sunday Open House

Last Sunday's Rockwell International Corp. open house for active and retired employees and their families was termed by personnel manager Tom McClellan, "A beautiful day, and they're beautiful people. We enjoyed it very much."

McClellan estimated that 1,000 people turned out for the afternoon, which featured informal tour areas marked off inside the plant. One of each type machine used in the plant was left running to allow observers unfamiliar with it to see it in action.

The company presented all the women with white carnations sporting blue ribbons, which represented Rockwell's colors, and men were given Rockwell key chains.

While participants enjoyed cider, coffee, and doughnuts, door prizes of a portable television, clock radio, and electric blanket were awarded to adults; and two bicycles to children.

United Way Campaign in High Gear

With a week to go in the United Way drive, campaign chairman Mrs. Jeanine Riemenschneider reports that \$3,280 has thus far been contributed toward the goal of \$28,362.

Stating that, "We hope we reach our goal—but we realize that a lot of people haven't been contacted yet," Mrs. Riemenschneider also noted that no report was yet available from the industrial contributors, traditionally one of the largest.

The breakdown of donations goes this way: rural, \$375; residential, \$1,500; school, \$125; commercial, \$750; professional, \$520; organizations, \$10.

Funds collected from the United Way campaign aid not only in the financial support of the United Way of Michigan, which supports various state health agencies, Leader Dogs for the Blind, the Michigan Association for Retarded Children, community organization and planning agencies, and specialized service agencies, but also local organizations. Major ones include the Chelsea Recreation Council (largest drive recipient at \$7,400), Chelsea Social Services, and the Boy and Girl Scouts of America—Portage Trails Council.

This year's goal is an increase of \$1,362 from last year's. The drive will continue until Oct. 15.

Inmate Nabbed Enjoying Nice Sunday Stroll

What would be just a nice afternoon walk for most local residents was definitely not so for a 17-year-old inmate of Cassidy Lake Technical school who decided to indulge in a jaunt to Chelsea Sunday morning.

Typifying the local feeling of futility, Chief of Police George Meranick says that a ticket for remaining on the tracks for longer than five minutes was issued to the railroad, but complained, "We gave them a ticket; that's all we can do. And we just mail it to them. They never even see any body."

The train which obstructed crossings at Main, McKinley, and Hayes streets, was particularly obnoxious to morning commuters and school children, since its unexpectedly lengthy stay was a peak travel time, from 7 to 7:40. Chief Meranick reports that traffic was backed up nearly a mile either way from the center of the village.

The ire of Ralph Brier, district bus manager, was roused by the early morning incident, which caused 11 of the "district's" 28 buses to be delayed. "Something like this happens three or four times a year," Brier declared. "Our last bus didn't get in until 9 a.m." Penn Central thus effectively delayed the buses even longer than the vandals who cut wires last week. Even with damage and doubling on runs, the last bus in that incident arrived by 8:40.

School buses are particularly susceptible to such train delays. Since the district does not allow any bus to travel a route that takes it over a crossing that is without gates and lights.

Brier also observed that one of his buses, while running various odd jobs around the district on an afternoon last week, had to cross six crossings and was halted at five of the six.

Her brother, Michael, took a fourth in the open working hunter category; fifth in equitation on the flat, 13 and under; and sixth in green working hunter, 13 and under.

Scott Alder on Alley Oop hauled in a first place in junior equitation, 13 and under, and fifth in equitation over fences.

In the previous week's hunter trials at Stony Ridge Farm, Andrea Behrman and Paper Moon also chalked up honors, this time the Gone-Away Perpetual Trophy for being the high-point junior working hunter. They had first in junior hack and hunter classes.

Kim Alder took the reserve championship of the show, riding Aitanga, owned by Mrs. Wendy Bowle. Her regular mount, Bacteria (Continued on page four)



NEW RECREATION COUNCIL DIRECTOR Tom Balistrere discusses some of his "something for everyone" proposals for fall recreation activities with the officers of the Recreation Council: Bruce Galbraith, secretary, second from left; Ann

Schaffner, treasurer; Tony Bowen, president. Balistrere, who has held similar recreation director positions in Carlisle, Pa., and at Albion College, returned to the Chelsea area recently after a three-year absence. He replaces Ken Larson in the post.

Penn Central Ties Up Traffic For 40 Minutes

In the seemingly never-ending story of Chelsea's trials with Penn Central Railroad, at least 11 district school buses and multitudes of disgruntled residents were inconvenienced by a train languishing on the tracks in the center of the village for 41 minutes Friday morning.

Typifying the local feeling of futility, Chief of Police George Meranick says that a ticket for remaining on the tracks for longer than five minutes was issued to the railroad, but complained, "We gave them a ticket; that's all we can do. And we just mail it to them. They never even see any body."

The train which obstructed crossings at Main, McKinley, and Hayes streets, was particularly obnoxious to morning commuters and school children, since its unexpectedly lengthy stay was a peak travel time, from 7 to 7:40. Chief Meranick reports that traffic was backed up nearly a mile either way from the center of the village.

The ire of Ralph Brier, district bus manager, was roused by the early morning incident, which caused 11 of the "district's" 28 buses to be delayed. "Something like this happens three or four times a year," Brier declared. "Our last bus didn't get in until 9 a.m." Penn Central thus effectively delayed the buses even longer than the vandals who cut wires last week. Even with damage and doubling on runs, the last bus in that incident arrived by 8:40.

School buses are particularly susceptible to such train delays. Since the district does not allow any bus to travel a route that takes it over a crossing that is without gates and lights.

Brier also observed that one of his buses, while running various odd jobs around the district on an afternoon last week, had to cross six crossings and was halted at five of the six.

Her brother, Michael, took a fourth in the open working hunter category; fifth in equitation on the flat, 13 and under; and sixth in green working hunter, 13 and under.

Scott Alder on Alley Oop hauled in a first place in junior equitation, 13 and under, and fifth in equitation over fences.

In the previous week's hunter trials at Stony Ridge Farm, Andrea Behrman and Paper Moon also chalked up honors, this time the Gone-Away Perpetual Trophy for being the high-point junior working hunter. They had first in junior hack and hunter classes.

Kim Alder took the reserve championship of the show, riding Aitanga, owned by Mrs. Wendy Bowle. Her regular mount, Bacteria (Continued on page four)

Bids Will Be Taken For New Fire Truck

At the turn of the century, Chelsea firefighters were actually bucket-brigades who managed to secure water for their rubber pails from hopelessly nearby wells or cisterns.

The early 1900's brought hand-drawn hook and ladders which included strange-sounding fixtures like pike poles, and rubber buckets attached to trucks.

1917 marked the purchase by the village of a Ford fire engine which included the "extra added" of a rack for the fire hose.

A Graham-Paige pumper engine quite possibly ushered in the new age of fire-fighting, when it was obtained by the Chelsea Fire Department in 1928. Somehow, it seems today a miracle that everything wasn't already burnt away by the carelessness of man and the inadequacies of his devices to control his own blunders and unpredictable "acts of nature."

By the approval of the Village Council last Tuesday, Chelsea Fire Department, which presently possesses five trucks of varying ages from five to 31 years, will begin to accept bids for an all-new model truck to better serve the needs of the community.

According to Fire Chief James Gaken, the new truck will be a combination pumper-tanker, which will pump 1,000 gallons of water per minute and will itself hold 1,500 gallons. Its increased high pressure will be particularly helpful in fighting the rural fires frequent in this area, he noted.

Of the older trucks, whose sentimental value might be significant to some, Gaken reports practically "For them, we find parts increasingly difficult to obtain, which can be a real problem when it might take anywhere from several days to several weeks to return the things to working order."

First step toward the shiny new item residing in the Fire Station will be the opening of bids for the body, including the pump, compartments, and other necessities, followed by bids for the chassis from commercial dealers.

Gaken estimates that the new truck, which will be obtained in a bit longer than a year due to these necessary bidding procedures, will be "ten times as efficient" as even the next-youngest member of the fire fleet, a 1968 model.

Frosh Grid Team Loses to Jackson NW

Freshman gridders dropped a squeaker to Jackson Northwest last Tuesday, 12-6, lowering the Little Bulldogs' record to 1-2. Northwest capitalized on Chelsea's mistakes in the first half and scored on a long pass and a long end run. A fine Mountie defense and Chelsea's own occasionally uninspired play kept the Bulldogs from rousing any threats in this half.

A considerably more inspired team returned to the field for the Bulldogs in the second half. Improved blocking from Bill Paul, Don Nadeau, Scott Owens, Dale Headrick and Mark Smyth gave some push to the offense. John Toon's pass to Pete Feeney put the ball deep in Northwest territory, and Dave Hendricks raced 12 yards to score after six minutes of the third quarter.

Later in the quarter, Chelsea threatened again when a fourth down pass from Pete Feeney to John Toon gained 30 yards to put the Bulldogs at Northwest's 15-yard line. The threat ended when Don Morrison was stopped for a loss on a fourth and three play.

From that point, although the game saw-sawed back and forth, Northwest retained their slim lead and chalked up their third win of the season.

T. Balistrere Will Direct Rec. Council

Promising to provide "something for everyone," Tom Balistrere, varsity basketball coach at Chelsea High school, was appointed director of the Chelsea Area Recreation Council last night.

Balistrere, who returned this year to Chelsea from Carlisle, Pa., after a three-year absence, replaces Ken Larson, who resigned recently. The new director has held similar recreation offices at Albion College and in Carlisle.

In his new position, Balistrere will be responsible for "developing and carrying out the program of sports, classes and other leisure time activities for everyone in the Chelsea School District."

The outline of tentative fall programming that he presented to the Council upon his appointment Wednesday concurred with his intention to aim activities at all ages. It included numerous arts and crafts-oriented classes, a men's conditioning club, a gun safety program, Christmas card painting and silkscreening classes, and a Halloween poster contest and Thanksgiving Day cartoon show with prizes like bicycles to be awarded.

Balistrere said he also hopes to organize a golden age club, community bingo, and judo and karate classes for various age groups.

At present plans for these activities are not concrete, but a list of course offerings, times, places and teachers will be listed in future issues of The Standard. Balistrere also noted that he may soon be advertising for teachers for some of his projected classes.

In addition to new members, Mrs. Gil Johnson and Gerald Ringe have been named to three-year terms on the Recreation Council, and Bruce Galbraith will fill a two-year term left vacant by the resignation of Robert Daniels.

Present Recreation Council membership is: president, Tony Bowen; secretary, Bruce Galbraith; treasurer, Ann Schaffner; members at large, Harold Dresch, Ginny Johnson, Gerald Ringe; village council representatives, Richard Borton and Sam Johnson; school board representative, Robert Schaffer.

Bethel Church Retired Pastor Dies Sunday

The Rev. Theophil W. Menzel, retired pastor of the Bethel United Church of Christ in Freedom township, died Sunday, Oct. 7, at St. Joseph Mercy Hospital in Ann Arbor at the age of 71.

A native of Washington, D. C., the Rev. Menzel received his undergraduate degree from Elmhurst College and pursued graduate studies at Eden Theological Seminary, Yale Divinity School and Washington University. At Elmhurst he was a professor of religion and at Eden, professor of history of religion.

As pastor of the Freedom township church for 21 years, the Rev. Menzel also was co-editor of "Daily Devotional Guide," a publication of the United Church of Christ. He had also contributed curriculum materials for the Division of Christian Education of the Board for Homeland Ministries of the United Church of Christ for 30 years. Recently he completed a history of Ann Arbor's Bethlehem church.

For the past several months, the Rev. Menzel had served as interim pastor at St. Andrew's United Church of Christ in Dexter.

He is survived by his widow, Annemarie; two daughters, Mrs. Ray (Rhea) Whitehead of Hong Kong, and Mrs. James (Anne) Helm of Oberlin, O.; a son, Paul, of Tacoma, Wash.; three brothers and three sisters; and five grandchildren.

Memorial services were held Tuesday, Oct. 9, at 3 p.m. at the Bethel United Church of Christ in Freedom township.

Memorial contributions should be made to the American Missionary Association's Negro College Fund and should be sent to Bethel United Church of Christ, Route 1 (10425 Bethel Church Rd.), Manchester 48158.

Chelsea's junior varsity gridders trampled Novi last week, 35-0, with an offensive barrage that subsided only momentarily in the third quarter.

Anthony Houle began the drubbing in the first quarter when he scored the first touchdown on a seven-yard run, and Dave Watson ran for the extra point to put the tally at 8-0. The next scoring play featured Watson passing to Jim Boyer, who ran 35 yards for the touchdown. Watson again ran for the extra point to make it 16-0.

In the second quarter the action was much the same as the J.V. Bulldogs pushed the score out to reach, John Collins raced in on a 15-yard run to put Chelsea ahead 22-0, and Jim Marshall kicked the extra point. Then Dave Watson once again passed to Jim Boyer, this time on a play that covered 75 yards. Boyer raced in for yet another touchdown, but the extra point attempt failed.

Only in the third quarter were Chelsea's scoring attempts futile, and that largely due to the Bulldogs' errors, as they fumbled twice.

In the final quarter, a 35-yard touchdown run by Dan Hagen finished the game's scoring.

Defensively Chelsea was led by Jerry Miliken with 14 tackles. Jim Boyer with 12, Tony Robards with 9, Jim Marshall with 8, and Kevin Kelly with 7. Grabbing Novi fumbles were John Collins, who recovered two, and Jim Boyer, Mike Kozminski, and Mark Burnett, each of whom recovered one. Dave Watson intercepted a pass. Coach Jon Schaffner rated the game as "A good team effort. Everyone played quite a bit and did well. The offensive blocking (Continued on page four)

community bingo, and judo and karate classes for various age groups.

At present plans for these activities are not concrete, but a list of course offerings, times, places and teachers will be listed in future issues of The Standard. Balistrere also noted that he may soon be advertising for teachers for some of his projected classes.

In addition to new members, Mrs. Gil Johnson and Gerald Ringe have been named to three-year terms on the Recreation Council, and Bruce Galbraith will fill a two-year term left vacant by the resignation of Robert Daniels.

Present Recreation Council membership is: president, Tony Bowen; secretary, Bruce Galbraith; treasurer, Ann Schaffner; members at large, Harold Dresch, Ginny Johnson, Gerald Ringe; village council representatives, Richard Borton and Sam Johnson; school board representative, Robert Schaffer.

Bethel Church Retired Pastor Dies Sunday

The Rev. Theophil W. Menzel, retired pastor of the Bethel United Church of Christ in Freedom township, died Sunday, Oct. 7, at St. Joseph Mercy Hospital in Ann Arbor at the age of 71.

A native of Washington, D. C., the Rev. Menzel received his undergraduate degree from Elmhurst College and pursued graduate studies at Eden Theological Seminary, Yale Divinity School and Washington University. At Elmhurst he was a professor of religion and at Eden, professor of history of religion.

As pastor of the Freedom township church for 21 years, the Rev. Menzel also was co-editor of "Daily Devotional Guide," a publication of the United Church of Christ.

He had also contributed curriculum materials for the Division of Christian Education of the Board for Homeland Ministries of the United Church of Christ for 30 years. Recently he completed a history of Ann Arbor's Bethlehem church.

For the past several months, the Rev. Menzel had served as interim pastor at St. Andrew's United Church of Christ in Dexter.

He is survived by his widow, Annemarie; two daughters, Mrs. Ray (Rhea) Whitehead of Hong Kong, and Mrs. James (Anne) Helm of Oberlin, O.; a son, Paul, of Tacoma, Wash.; three brothers and three sisters; and five grandchildren.

Memorial services were held Tuesday, Oct. 9, at 3 p.m. at the Bethel United Church of Christ in Freedom township.

Memorial contributions should be made to the American Missionary Association's Negro College Fund and should be sent to Bethel United Church of Christ, Route 1 (10425 Bethel Church Rd.), Manchester 48158.



GIANT PUMPKIN: Land proposed for Mill Creek Park was the soil that grew Sylvester Weber's pumpkin that measures 76 inches in circumference. Weber, whose pumpkin is presently on display at Jiffy Market, declares, "We say save the good farm land and develop some of the thousands of acres of park land we already have."



THREE PUMPKINS TOTALING 217 POUNDS all grown on the same vine, were part of this year's crop for Steve Toth, 2100 Chelsea-Manchester Rd. Toth said he thought he had removed all his pumpkin plantings from one area in his field, but discovered these monstrosities, individually weighing 84, 65, and 68 pounds.

CHELSEA JAYCEES
CHICKEN
BAR-B-Q
SUNDAY,
OCT. 14
Corner of M-52 and US-12
Across from Polly's
Serving from 11 a.m.
\$2.00 per serving

Colleges Schedule Representatives At Chelsea High

Friday, Oct. 10—
 1:30 p.m. in counseling office, representatives of Mercy College of Detroit will be available for consultation.
 Monday, Oct. 22—
 9:30 a.m. in counseling office, Michigan State University assistant director of admissions Terry Doyle will be available.
 Monday, Oct. 22—
 Kalamazoo college representative available in counseling office.
 Friday, Nov. 3—
 University of Michigan assistant director of admissions Kathy Wilson will be available.

Poetry Exhibit Arranged at Methodist Home

As the culmination of two years of work gathering and organizing her husband's poetry, Mrs. Lloyd Frank Merrell will present an exhibition of his work at the Chelsea United Methodist Home's Stage Room on Oct. 19 and 20. The exhibition is planned to coincide with the marking of National Poetry week, which begins Sunday, Oct. 14. Mrs. Merrell notes that the Poetry Society of America was founded in 1910 and has since, acting as the parent organization to many regional groups throughout the country. During his life the Rev. Merrell, an eight-year resident of the home until his death two years ago, published three books of poetry. Another was published posthumously in December, 1972, and was entitled "Daughter of Star Dawn." Mrs. Merrell said that he also conducted a poetry class several years ago in the area which attracted a number of interested area poets. Mrs. Merrell invites all interested poets in the community to attend the exhibition, which is scheduled from 2 to 4 p.m. Opinions are necessary in life, but it's not absolutely necessary that anyone else agree with yours.

Scholastic Aptitude Tests Will Be Administered Oct. 23

Every year more than a million high school students sweat and strain and swear their individual ways through an enticing product of the American educational system known most intimately by its participants as the PSAT-NMSQT. Its full, proper name is the Preliminary Scholastic Aptitude Test-National Merit Scholarship Qualifying Test, which is a mouthful even for someone who thinks he wants to go to college. Chelsea High school again will be the local site for the test, scheduled for Tuesday, Oct. 23. Registration, including payment of a \$2.50 registration fee required by the College Entrance Examination Board, suppliers of the test, will begin Monday, Oct. 15 in the high school's main office. Upon registering, students may obtain this year's PSAT-NMSQT Student Bulletin, which explains primary reasons for taking the test. Basically, the test is what the title says. It is "preliminary" because it is usually taken in the junior year and serves as a prelude to the Scholastic Aptitude Test, which is taken by seniors and is similar but considerably more difficult. Predicting SAT scores from the PSAT, however, can usually be fairly accurately done, since the two are the same type of test, measuring verbal and mathematical ability, and are administered by the same group, the CEEB. The College Board people term SAT "the test that almost everyone takes who is going to college." The second part of the name of the test (NMSQT) refers to the National Merit Scholarship competition, in which a student declares his intent to compete by participating in this test. From the results of the PSAT-NMSQT, semi-finalists are chosen by the National Merit Scholarship Corporation, which annually awards 3,100 scholarships of varying amounts to students all over the country. Once the test has been taken, the real entertainment begins. The College Entrance Exam Board provides a number of bulletin-type circulars that may either aid the

student in choosing some super-duper college or make him feel incredibly inferior, and all because of his test scores. They all have remarkably good intentions, however. First, when the scores are returned to the student, a copy of a booklet called "Your PSAT-NMSQT Scores" is enclosed, and explains how to estimate SAT scores from the barrage of numbers and percentages just received. After figuring those out, services like "The College Handbook" and "College Locator Service" allow those not afraid of suffering by comparison to put their own scores against those of students presently enrolled at hundreds of colleges and universities all over the country. Chances of admission of the student's choice—along—and eventual success at can be reasonably well-predicted, too. If this last prediction proves discouraging, the CEEB offers still another service, its Student Search Service, which offers information from colleges "that may be looking for students like you." But don't think so far in advance. Right now, "students like you"—college bound or maybe college bound, should register for the PSAT-NMSQT. Even if you're not quite sure what all the letters stand for. **MODERN YOUTH** Sultor speaks to father: "I've come to ask for your daughter's hand, the two front rooms and use of the kitchen."



TROOP 100—
 We went to Margaret Leisinger's house today and went on a hike. We discovered lots of things, like fieldcorn, prickly pears, milkweed, and black walnuts. We ended with a marshmallow roast. It was lots of fun. Anna Aello, scribe.

TROOP 82—
 We went to the nature center and picked flowers. When we came back we put them in jars. We plan to dry out the flowers to make flower arrangements. Next week instead of our regular meeting we plan to go bowling Monday instead. Michelle Alexander, reporter.

TROOP 145—
 We made plans for investiture and for our parents' tea. We are learning the new Girl Scout promise and we had a birthday party for Kristin Thomas. We played a game called "Struttin' Miss Lucy." Amy Hume, scribe.

A law enacted Aug. 2, 1973, exempts medical care to peacetime veterans and certain dependents, and streamlines health care delivery for the rest of the veteran population. Success that's permanent usually comes slowly, if at all.

GROHNERT'S FARM MARKET CLOSED FOR THE SEASON

Thanks for your patronage. See you again next year.

—Francis Grohnert.

SOUTHERN BOY MANOR MOTEL

Efficiency Units - By Day, Week, or Month
13190 M-52
 (2 miles south of Stockbridge)
PHONE (517) 851-4213

90%

of the Chiropractic Patients we surveyed stated that they use chiropractic for the health of their families because "IT WORKS!"

THE OTHER 10%

stated that they use chiropractic for the health needs of their families because "It is the only way to live... to really live!"

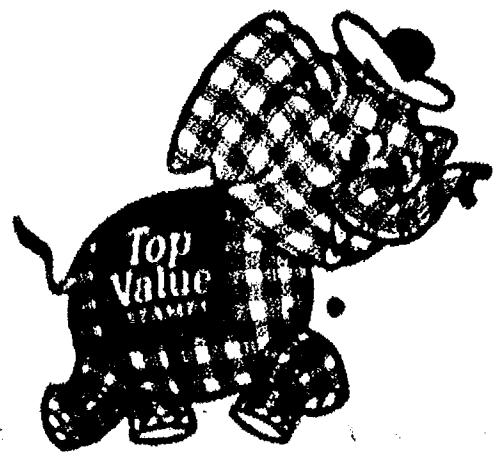
Interested in really living?

HOURS: Mon., Wed., Fri., 9-12, 2-5, 6-8
 Saturdays, 9-12

CHIROPRACTIC FOR LIFE CHIROPRACTIC CENTER

DANIEL R. ELWART, D.C.
 PHONE 475-7633
 7970 Clerk Lake Rd Chelsea, Michigan

Want to sell a car? Try a Standard Want Ad!



Full Line Supermarket
 BEER - WINE - LIQUOR
 AUTHORIZED
 FOOD STAMP STORE
 LOTTERY TICKETS
 MARATHON GAS PUMPS
 2-CYCO GAS PUMPS

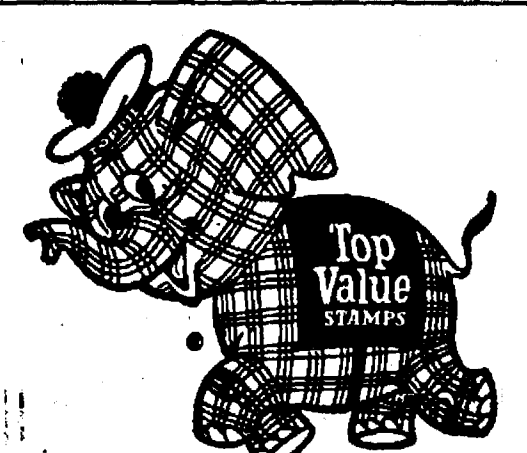
Jiffy market

Big Enough To

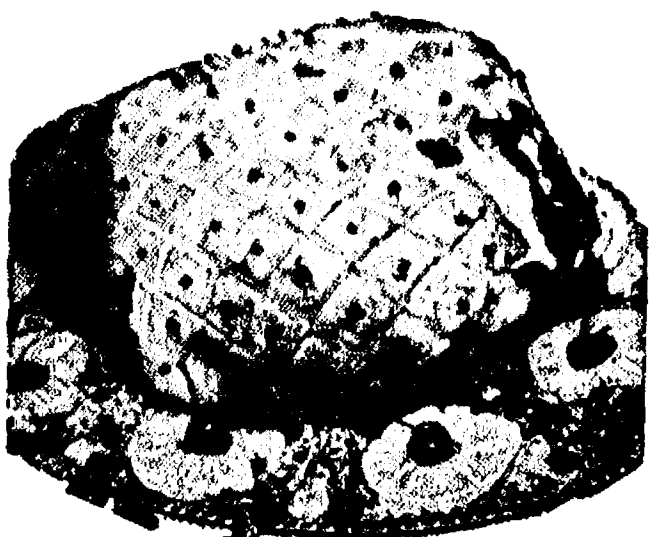
Serve You . . . Small Enough To Know You!

Open 7 Days A Week
 7 a.m. to 10 p.m.
 Corner Sibley & Wernker Rds.
 PHONE 475-1701

Sale Prices Effective
 Thurs., Oct. 11 thru Sun., Oct. 14



TOP VALUE STAMPS - GUARANTEED SATISFACTION - COURTEOUS SERVICE



FARMER PEET'S HI-STILE

WHOLE HAM

12-14 Lb. Av. **97¢ lb.** Semi-Boneless De-Fatted Smoked Fully Cooked

1/2 HAM \$1.05 lb.

U.S. Choice Beef Chuck Roast Sale

BLADE CUT lb. **89¢**

CENTER CUT lb. **99¢**

ARM CUT lb. **\$1.19**

ENGLISH CUT lb. **\$1.19**

U. S. CHOICE **\$1.49**

RIB STEAKS lb. **\$1.29**

BONELESS **\$1.29**

BEEF STEW lb. **79¢**

BEEF SHORT RIBS . . lb. **79¢**

RISDON'S—The milk that lowered Chelsea's Milk Prices

HOMOGENIZED MILK gal. 99¢

1-PT., 8-OZ. BOTTLE OLDE FARM **PANCAKE SYRUP 59¢**

1-LB. PKG. CAMELOT **EGG NOODLES 35¢**

VELVET CREAMY OR CRUNCHY **PEANUT BUTTER, 2-lb. jar 89¢**

8-OZ. PKG. VOORTMAN'S Biscuits a la Hollandaise **DUTCH STYLE COOKIES, 3 for \$1**

4-OZ. CAN DURKEE'S **BLACK PEPPER 39¢**

1-QT., 1-PT. CANS, ALL FLAVORS **HI-C FRUIT DRINKS . 3 for \$1**

1-LB. BOX CAMELOT **SALTINES 25¢**

12-OZ. PKG. KELLOG'S **CORN FLAKES 27¢**

11-OZ. JAR BORDEN'S **CREMORA 49¢**

1-LB. PKG. CAMELOT **ELBOW MACARONI 29¢**

JIFFY MARKET'S CRISPY FLAKE

POTATO CHIPS . . 13-OZ. Bag 49¢

MEADOWDALE **SALAD DRESSING . . . qt. 39¢**

5-OZ. PAN **JIFFY POP POPCORN . . . 33¢**

2-LB. BAG BUNNY POP WHITE OR YELLOW **POPCORN 19¢**

PRENGLE'S NEW FANGLED **POTATO CHIPS . . . 3 pack 89¢**

YOUR CHOICE OF BRANDS & SIZES

1-PT., 2-OZ. TOILET BOWL CLEANER **SNO - BOL 29¢**

20-30 GAL. DECORATOR **TRASH BAGS . . . 10-ct. box 59¢**

ABSOPURE **DISTILLED WATER . . gal. 45¢**

NEW VERNORS NATURAL FLAVORS **SODA POP . . 1-pt., 12-oz. 19¢**

CIGARETTES . carton \$3.39

JIFFY MARKET HOT PRICE

LILY BRAND U. S. Grade A All White

FRESH EGGS

Small **45¢ doz.**

CAMELOT

ORANGE JUICE

5 6-Oz. Cans **\$1.00**

BORDEN'S JUMBO TREAT VANILLA

ICE CREAM

\$1.29 gal.

PILLSBURY SWEET or BUTTERMILK

BISCUITS

Tube of 10 **3 for 29¢**

MICHIGAN LARGE or SMALL CURD

COTTAGE CHEESE

1 1/2-Oz. Ctn. **45¢**

GOLDEN YELLOW

BANANAS

16¢ lb.

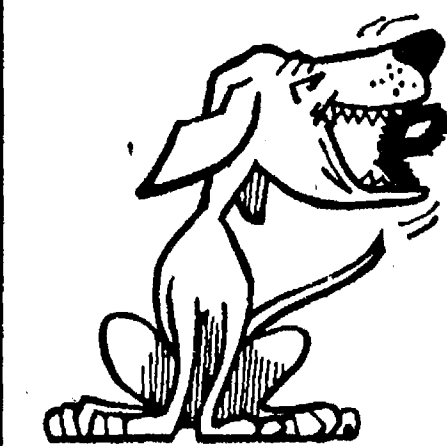
SPECIAL THIS WEEK WATER SOFTENER SALT

DIAMOND CRYSTAL SALT NUGGETS

80-lb. Bag **\$2.29**

ALSO AVAILABLE: 40-lb. Red Out nuggets, Diamond Crystal 40-lb. salt nuggets, Louisiana water softener rock salt, DC water softener blocks, 40-lb. Purex fine water softener, 50 lbs.

Large Variety 25 lb. Dog Food Conveniently sold from Our Room



PET FOODS

PURINA LIVER FLAVORED

DOG CHOW

25-lb. Bag **\$2.99**



JIFFY MARKET—MARATHON GAS LOW PRICES PLUS FREE TOP VALUE STAMPS

REGULAR GAS **41.9¢ gal.** PREMIUM GAS **44.9¢ gal.**
 Price includes all taxes.

SUNDAY, OCT. 14th - HAVE A BEAUTIFUL DAY!

ENJOY A JAYCEE BAR-B-Q CHICKEN

AND TAKE THE FAMILY FOR A RIDE. THE CHICKEN IS DELICIOUS, THE SCENERY AROUND CHELSEA IS BEAUTIFUL.



FREE!

100 TOP VALUE STAMPS

WITH THIS COUPON

JIFFY MARKET

CHELSEA, MICH.

GOOD ONLY OCT. 11-14, 1973

New Postal Money Order System Starts

A new money order system with the Post Office is scheduled to start in Chelsea on Oct. 12, according to Postmaster Richard Schaules.

Postmaster Schaules said the new system will allow customers to purchase money orders for up to \$500 in increments of \$25. The money orders will be valid for 180 days and can be cashed at any Post Office or bank.

The Postal Service has been operating a money order system since 1964. The new system will allow customers to purchase money orders for up to \$500 in increments of \$25. The money orders will be valid for 180 days and can be cashed at any Post Office or bank.

The Postal Service has been operating a money order system since 1964. The new system will allow customers to purchase money orders for up to \$500 in increments of \$25. The money orders will be valid for 180 days and can be cashed at any Post Office or bank.

The Postal Service has been operating a money order system since 1964. The new system will allow customers to purchase money orders for up to \$500 in increments of \$25. The money orders will be valid for 180 days and can be cashed at any Post Office or bank.

The Postal Service has been operating a money order system since 1964. The new system will allow customers to purchase money orders for up to \$500 in increments of \$25. The money orders will be valid for 180 days and can be cashed at any Post Office or bank.

The Postal Service has been operating a money order system since 1964. The new system will allow customers to purchase money orders for up to \$500 in increments of \$25. The money orders will be valid for 180 days and can be cashed at any Post Office or bank.

The Postal Service has been operating a money order system since 1964. The new system will allow customers to purchase money orders for up to \$500 in increments of \$25. The money orders will be valid for 180 days and can be cashed at any Post Office or bank.

The Postal Service has been operating a money order system since 1964. The new system will allow customers to purchase money orders for up to \$500 in increments of \$25. The money orders will be valid for 180 days and can be cashed at any Post Office or bank.

The Postal Service has been operating a money order system since 1964. The new system will allow customers to purchase money orders for up to \$500 in increments of \$25. The money orders will be valid for 180 days and can be cashed at any Post Office or bank.

The Postal Service has been operating a money order system since 1964. The new system will allow customers to purchase money orders for up to \$500 in increments of \$25. The money orders will be valid for 180 days and can be cashed at any Post Office or bank.

The Postal Service has been operating a money order system since 1964. The new system will allow customers to purchase money orders for up to \$500 in increments of \$25. The money orders will be valid for 180 days and can be cashed at any Post Office or bank.

The Postal Service has been operating a money order system since 1964. The new system will allow customers to purchase money orders for up to \$500 in increments of \$25. The money orders will be valid for 180 days and can be cashed at any Post Office or bank.

The Postal Service has been operating a money order system since 1964. The new system will allow customers to purchase money orders for up to \$500 in increments of \$25. The money orders will be valid for 180 days and can be cashed at any Post Office or bank.

The Postal Service has been operating a money order system since 1964. The new system will allow customers to purchase money orders for up to \$500 in increments of \$25. The money orders will be valid for 180 days and can be cashed at any Post Office or bank.

The Postal Service has been operating a money order system since 1964. The new system will allow customers to purchase money orders for up to \$500 in increments of \$25. The money orders will be valid for 180 days and can be cashed at any Post Office or bank.

CLUB SCOUT NEWS

MEET 1. PACK 418
The new pack meeting was held at the Chelsea Standard on Oct. 10. The meeting was attended by the pack members and the pack leader, Mr. John Sprague.

MEET 2. PACK 418
The pack meeting was held at the Chelsea Standard on Oct. 11. The meeting was attended by the pack members and the pack leader, Mr. John Sprague.

MEET 3. PACK 418
The pack meeting was held at the Chelsea Standard on Oct. 12. The meeting was attended by the pack members and the pack leader, Mr. John Sprague.

MEET 4. PACK 418
The pack meeting was held at the Chelsea Standard on Oct. 13. The meeting was attended by the pack members and the pack leader, Mr. John Sprague.

MEET 5. PACK 418
The pack meeting was held at the Chelsea Standard on Oct. 14. The meeting was attended by the pack members and the pack leader, Mr. John Sprague.

MEET 6. PACK 418
The pack meeting was held at the Chelsea Standard on Oct. 15. The meeting was attended by the pack members and the pack leader, Mr. John Sprague.

MEET 7. PACK 418
The pack meeting was held at the Chelsea Standard on Oct. 16. The meeting was attended by the pack members and the pack leader, Mr. John Sprague.

MEET 8. PACK 418
The pack meeting was held at the Chelsea Standard on Oct. 17. The meeting was attended by the pack members and the pack leader, Mr. John Sprague.

MEET 9. PACK 418
The pack meeting was held at the Chelsea Standard on Oct. 18. The meeting was attended by the pack members and the pack leader, Mr. John Sprague.

MEET 10. PACK 418
The pack meeting was held at the Chelsea Standard on Oct. 19. The meeting was attended by the pack members and the pack leader, Mr. John Sprague.

MEET 11. PACK 418
The pack meeting was held at the Chelsea Standard on Oct. 20. The meeting was attended by the pack members and the pack leader, Mr. John Sprague.

MEET 12. PACK 418
The pack meeting was held at the Chelsea Standard on Oct. 21. The meeting was attended by the pack members and the pack leader, Mr. John Sprague.

MEET 13. PACK 418
The pack meeting was held at the Chelsea Standard on Oct. 22. The meeting was attended by the pack members and the pack leader, Mr. John Sprague.

MEET 14. PACK 418
The pack meeting was held at the Chelsea Standard on Oct. 23. The meeting was attended by the pack members and the pack leader, Mr. John Sprague.

MEET 15. PACK 418
The pack meeting was held at the Chelsea Standard on Oct. 24. The meeting was attended by the pack members and the pack leader, Mr. John Sprague.

MEET 16. PACK 418
The pack meeting was held at the Chelsea Standard on Oct. 25. The meeting was attended by the pack members and the pack leader, Mr. John Sprague.

MEET 17. PACK 418
The pack meeting was held at the Chelsea Standard on Oct. 26. The meeting was attended by the pack members and the pack leader, Mr. John Sprague.

MEET 18. PACK 418
The pack meeting was held at the Chelsea Standard on Oct. 27. The meeting was attended by the pack members and the pack leader, Mr. John Sprague.

MEET 19. PACK 418
The pack meeting was held at the Chelsea Standard on Oct. 28. The meeting was attended by the pack members and the pack leader, Mr. John Sprague.

MEET 20. PACK 418
The pack meeting was held at the Chelsea Standard on Oct. 29. The meeting was attended by the pack members and the pack leader, Mr. John Sprague.

District Court Proceedings

Week of Oct. 30
Joseph Jonida pled guilty to driving with a suspended license and was assessed fines and court costs of \$30.

James Whipple pled guilty to passing a school bus which was flashing its red lights, and was assessed fines and court costs of \$75.

William Starkweather pled guilty to going through a red light and was assessed fines and court costs of \$26.

Henry S. Kolodziejczak pled guilty to trespassing and will be sentenced Nov. 9.

James Foster was bound over to circuit court for examination on Oct. 5 at 8:30 a.m.

Richard Dennis was bound over to circuit court for examination on Oct. 5 at 8:30 a.m.

Thomas Smith pled guilty to driving with a head light out and was assessed fines and court costs of \$26.

George Wright was found guilty of indecent and obscene conduct and was assessed fines and court costs of \$30, to be paid by Oct. 10.

Randall Center did not appear and a bench warrant was issued for him.

Thomas Ball was found guilty of impaired driving and assessed fines and court costs of \$200.

Leslie Hudson was found guilty of speeding and assessed fines and court costs of \$36.

Gerald Schmidt pled guilty to a charge of driving while under the influence of liquor and was assessed fines and court costs of \$100.

Dennis McCale pled guilty to speeding and was assessed fines and court costs of \$32.

Charles Scisson pled guilty to careless driving and was assessed fines and court costs of \$50.

George Lovely pled guilty to improper lane usage and was assessed fines and court costs of \$21.

He pled guilty to a charge of drunk and disorderly and was assessed fines and court costs of \$50, with six months probation.

Anna Redinger was found guilty of possessing no life-saving devices and was assessed fines and court costs of \$16.

Richard Cheek pled guilty to tampering with a traffic light and was assessed fines and court costs of \$16.

Charles Hodge pled guilty to tampering with a motor vehicle and was assessed fines and court costs of \$100 and one year probation.

Larry Sweet pled guilty to a charge of minor in possession of alcohol, guilty to a charge of possession of marijuana, and guilty to disorderly conduct. Sentencing is scheduled for Nov. 5 at 2 p.m.

Kenneth Karta pled guilty to driving with a suspended license and was assessed \$75 in fines and court costs and sentenced to five days work on the Saline Police Work Program.

Dexter Risner pled guilty to a charge of drunk and disorderly and was assessed \$50 in fines and court costs.

Kenneth Rohde pled guilty to impaired driving and to having open alcohol in a motor vehicle and will be sentenced Nov. 14.

Eric Apperle was found guilty of having no life-saving devices and was assessed fines and court costs of \$16.

Steven Bondie pled guilty to speeding and was assessed fines and court costs of \$71.

Howard Holloway pled guilty to driving while under the influence of liquor and will be sentenced Nov. 7 at 9:30 a.m.

Patricia Derulder pled guilty to speeding and was assessed fines and court costs of \$41.

A motion for a new trial for Gerald Schmidt was dismissed and he was found guilty of driving while under the influence of liquor and will be sentenced Oct. 3, at 9:30 a.m.

Ronald Peak did not appear and a bench warrant was issued for him.

Norman Borton did not appear and a bench warrant was issued for him.

David Irwin pled guilty to speeding and was assessed fines and court costs of \$21.

Thomas Morrison pled guilty to driving while under the influence of liquor and was assessed \$300 in fines and court costs. He was also sentenced to two years probation and to participation in the alcohol program.

Melvin Boudrie pled guilty to passing over the double yellow line and was assessed fines and court costs of \$35.

Patricia Josephson pled guilty to speeding and was assessed fines and court costs of \$31.

Zip Code Being Used on 85% of Letters

The Zip Code—the digit number following the state in the United States addresses—now appears on more than 85 percent of first class mail, according to Postmaster Richard Schaules.

He said the coding of mail has become even more important in recent months with a growing share of first class letters sorted on machine equipped with the Zip Mail Translator (ZMT).

"With this computerized unit, the letter sorting machine operator simply keys the ZIP Code appearing on the envelope," Postmaster Schaules said. "The ZIP Code is then translated" so the envelope is routed to the bin which will give it the best transportation," he said.

Previously, postal clerks were required to learn complex local and regional sorting schemes that are now carried in the ZMT computer.

Postmaster Schaules said that ZIP Code usage is running about 85 percent on first class mail going from one business to another.

"The mail from average family to businesses does much better, however, with the percentage nearing 90 percent," he said. "This reflects the near universal use of ZIP Code on business stationery, including return address, order forms, coupons, reply envelopes, etc."

He said that ZIP Code use by other classes of mail includes: airmail letters, 91 percent, and parcel post, 96 percent. The use of ZIP Code has been mandatory since 1967 for second class and bulk third class rates.

Postmaster Schaules explained the five ZIP Code digits as a "telescopic sequence," focusing on successively smaller areas. The first digit points to a geographically large area, the second and third digits to one of 556 sectional centers—key post offices which serve 30 to 200 or more smaller post offices—or to one major city post office. The last two digits stand for the post office or postal station of ultimate destination.

"For example," he said, "Zip number 21750 means that the letter is bound for the Middle Atlantic states—represented by the figure 2. The digits 17 'single' out the Frederick sectional center in Maryland. Accordingly, the sorter deposits the letter into an outgoing pouch."

The letter, together with all other sorters re-route the letter to its destination—Hancock, Md., as specified by the digits 50.

FIRST 15 YEARS
In the National Aeronautics and Space Administration's first 15 years, some 300 satellites have been sent into earth orbit and interplanetary space.

Letters to the Editor

The Editor:
The Chelsea Standard, Sept. 27, 1973 listed the "United Way" canvassers and their individual groups for canvassing. Under the professional people, under the direction of Mrs. Duane Warren, Mrs. W. C. Lane was to call on the pharmacists (our place of business does not supply drugs), the veterinarians (I'm sure most of the chiropractic patients would be offended to be called animals), the funeral directors (we have conducted

no funerals from our office), and the optometrists (the Dr. does use an ophthalmoscope, but has never prescribed corrective lenses for anyone). My question is, where do chiropractic physicians fit into this category?

I don't know where the omission occurred, Mrs. Warren was aware of the chiropractic profession, we received her letter, perhaps the secretary, James Hoffmeyer, chose to omit it from print. In any case, the sticker left in our office saying "WE GIVE" has been altered to "WE GAVE!"

Sincerely,
Mrs. Jerald L. Flinn

EVERGREENS at a Bargain!

WE ALMOST GIVE OUR TREES AWAY!
Big Hertz and Pfitzer Junipers, 3 ft. across
4 for \$12.00
(Customer digs, 3 minutes will dig a tree)
We furnish containers free. Bring your shovels. This is a \$40 value. Compare elsewhere then you know! Excellent planting and digging is right now.

ALSO, READY-DUG BLUE SPRUCE - Up to 2 ft.
For Only \$3.50 ea., 4 for \$12, or 8 for \$20
Only at Heise's at these low prices. Hurry for yours!

A. HEISE'S TREE FARM

North side of I-94, Exit 162, Fletcher Rd., then turn right (east) on Seitz Service Drive, 2 miles east of Chelsea.
Open 8 to 12 daily, Saturday and Sunday, 8 to 3
PHONE NO 5-4025

GUN AUCTION

SATURDAY, OCTOBER 13, 1973 - 2 p.m. (EDT)
Selling in Community Building, Chelsea Fairgrounds, Chelsea, Michigan, 11 miles west of Ann Arbor or 17 miles east of Jackson on I-94 to Chelsea Exit (M-52), 1 mile north.

80 - GUNS SELLING - 80

30 WINCHESTERS: Model 12-12 ga., Model 12-16 ga., Model 12-20 ga., Model 42-410 ga., Model 01-10 ga., Model 1887 Lever Action 12 ga., Model 1887 Lever Action 10 ga., Model 12 Nickel Steel Barrel 12 ga., Model 62A .22 cal., Model 90 .22 cal., Model 06 .22 cal., Model 94 .32 cal., Model 94 .30 cal., Model 97 12 ga., Model 92 Octagon Barrel .32 cal. Many other good ones.

MARLINS - STEVENS - REMINGTONS - SPRINGFIELDS
Roll Block, .22 cal., .32 cal., .25 cal., Single Shot, Pumps Single Shot Guns: Stanley Arms, Eclipse, Diamond, Crescent, Western, Harvard, Davenport, Camper, Crown Ejector.

PETER WERNIG FERCACH - TURKEY GUN.
DOUBLE BARREL.
RIFLE & 14 GA. SHOTGUN - NICE.

MOST OF THESE GUNS ARE IN EXTRA FINE CONDITION
Gun Related Items - Some Extra Shells - Including 14 ga. 25 POCKET KNIVES: Remington, Case XX, Boker, K-Bar, 1XL, etc.

Terms: Cash or Certified Check Only. Selling by Number.

LARRY CAMERON, OWNER
Send \$1.00 for Catalog

Sale Manager & Auctioneer
EVERETT R. MILLER
Rives Junction, Mich. 49277 Phone: (517) 569-3465
"Good Management Does Not Cost, It Pays"

COOSO Carpet Cleaning

October brings Halloween. So be careful that colored-paper decorations don't contact your carpet. They can cause stains. We recommend Host, the new method of cleaning carpets without water. The carpet is dry and ready to walk on immediately. Use our Host Electric Up-Brush. It's easy. Clean 40 sq. yds. only \$9.95.

MERKEL BROTHERS

SWISS STEAK SUPPER and BAZAAR

THURSDAY, OCT. 25
\$3.25 Adults - \$1.25 under 12 years
Continuous serving starts at 5:30 p.m.
COOK BOOKS NOW ON SALE
FRANCISCO UNITED CHURCH OF CHRIST
Phone for tickets
475-8357 or 475-7900 or 475-8575

LA-Z-BOY

RECLINA-ROCKER®




This chair is destined to be sought after by every member of your family. The generous proportions are enhanced by the burnished dark pine finish of the wood accents. It is fully reclining. It's the rocker that doesn't look like a rocker. La-Z-Boy's exclusive Comfort Selector's three-position leg-rest can be easily adjusted with or without reclining the chair. This gracious styling is certain to add charm and warmth to your home. A selection can be made from hundreds of attractive decorator colors and fabrics, most of them treated with Scotchgard Fabric Protectors.

Merkel Home Furnishings
Open Mon. & Fri. Until 9 Ph. 475-8621

Look What's New!

CHELSEA HEATING CO.

Complete Heating and Air Conditioning Service




Meet me on page 10.

Look What's New!

CHELSEA HEATING CO.

Complete Heating and Air Conditioning Service



★ Warm Air Heat
★ Hot Water Heat
★ Steam Heat
★ Humidification
★ Furnace and Boiler Cleaning

★ Air Conditioning
★ Electric Air Cleaning
★ Water Heaters
★ Gas and Oil Burner Service

475-2419

SAVE ON CARPET REMNANTS

CHOOSE FROM OVER 40 FRESH BALANCES UP TO 40 FT.
FASHION COLORS AND TEXTURES

EXAMPLE

A 12'x12' remnant big enough to do a small living room or bedroom and closet consists of 16 yards.

REMnant	\$4.95	Price equals	\$ 79.20
16 YDS.		PAD	20.64
Reg. Price		TAX	3.99
\$8.95		INSTALL	32.00
		TOTAL INSTALLED PRICE . . .	\$135.83

EASY TERMS. TAKE 42 MONTHS TO PAY

***OVER 100 NEWLY DISCONTINUED BOUND CARPET SAMPLES**

Merkel HOME FURNISHINGS



Mrs. William M. Harvey, Jr.

Louise DeFilippi, W. M. Harvey, Jr., Wed Saturday in Ypsilanti Chapel

Louise DeFilippi became the bride of William M. Harvey, Jr. on Saturday, Oct. 6, at Holy Trinity Chapel in Ypsilanti.

Approximately 250 guests attended the ceremony, which was conducted by the Rev. Fr. Bob Kerr of the chapel. Sister Joan sang four songs of wedding verse, with organ accompaniment by Steve Neau.

The bride is the daughter of Mr. and Mrs. Joseph DeFilippi, 1604 Whittier, Ypsilanti, and has attended Eastern Michigan University. She graduated from the respiratory therapy program at Washtenaw Community College and is presently employed by St. Joseph Mercy Hospital as a staff therapist.

The bridegroom is the son of Mr. and Mrs. William M. Harvey, Sr., of 13410 Old US-12. He is a 1971 graduate of Eastern Michigan University and is presently employed by the Chrysler Corp. in Chelsea as a technician in the emission department.

The bride wore a floor-length A-line gown of ivory French peau de soie, trimmed with pink velvet ribbon and seeded pearls around a bodice of ivory lace. Her chapel train veil of French net was topped by a camelot cap headpiece of ivory velvet adorned with seeded pearls and pink velvet ribbon trim. Her bouquet was of dark pink sweetheart roses, with baby's breath and carnations.

The matron of honor, Mrs. William Raymond, and maid of honor, Miss Bridget DeFilippi, wore dark pink crepe dresses, trimmed with ivory lace around the neck line and sleeves. Their head pieces were of pink sweetheart roses and baby's breath, and they carried bouquets identical to that of the bride.

Two bridesmaids, Judy Buss, of Ann Arbor, friend of the bride, and Joanne Harvey, sister of the bridegroom, also were in attendance. Their floor-length dresses of pastel pink crepe were accented with ivory lace around light pink sweetheart roses, baby's breath, and white carnations.

The bride's mother wore a floor-length pink polyester gown with lace bodice, while the bridegroom's mother appeared in a light green floor-length crepe gown, accented by gold accessories.

Attending the bridegroom were Michael Harvey, his brother, as best man; and Danny Allan and Timothy Elsemann of Chelsea and Larry O'Toole of Belleville, as ushers.

After the ceremony, approximately 350 guests adjourned to St. John the Baptist Church Hall, 411 Florence, Ypsilanti, for the reception given by the bride's parents, Florence Orley of Detroit assisted in cutting the wedding cake, which she made especially for the newlyweds. Harold Harvey, sister of the bridegroom, attended the guest book for the couple.

For travel to Nassau, site of an eight-day wedding trip, the bride chose an ivory knit pant suit, trimmed in pink, with pink accessories. The couple will live in Ann Arbor when they return.

Mr. and Mrs. Herman Reed attended the Disabled American Veterans and Auxiliary Mid-winter Conference at Midland, which was held Friday through Sunday. Both Mr. and Mrs. Reed were representatives of the Veterans Administration Volunteer Service at this conference.

District President Makes Inspection of VFW Auxiliary

Regular meeting of VFW Auxiliary No. 4076 was held Monday, Oct. 8, with 12 members present. This being the annual inspection meeting, Arlene Delp, sixth district president, of Lansing, was present as the inspecting officer. She was accompanied by Ida Woods, a past district president, also of Lansing.

Five dollars was voted out for the local United Way; five dollars for Battle Creek hospital for indigent patient's Christmas; and \$5 to the National Home for the children's Christmas party.

The annual Pow-wow is being held at Boyne Mountain, Oct. 12-14. National president Lola Reid will make her visit to the department during the Pow-wow.

It was also announced that the sixth district will convene Nov. 4, at Erie.

The following were appointed on committee for the Oct. 22 social meeting: chairman, Ruby Bauer, assisted by Gail Bauer, Norma Seyfried and Imogene Slocum.

Women's Federated Clubs Initiating Legislative Study

The question, "What kind of education are we funding?" will be key discussions when the Washtenaw County Federation of Women's Clubs holds their fall membership meeting Monday, Oct. 15. Members will convene at 1 p.m. in the Bethlehem United Church of Christ, 423 S. 4th Ave., Ann Arbor.

Hostess club will be Zonta of Ann Arbor. The meeting will center around a membership forum to delineate membership thinking on current legislation for expression through the State Federation and to legislators and other public leaders.

Major legislative information program was mandated during a meeting of presidents and delegates of the 25 member clubs held at the home of Mrs. Stanton G. Roesch, president of the Federation and of the Twentieth Century Club of Manchester. These leaders agreed with President Roesch that "legislative information and intelligent co-operative action thereon is a duty more pressing this year than most."

This intensified distaff interest in civic affairs, leaders note, is not isolated. They cite the new stature and proliferation nation-wide of small town and suburban weeklies as reflective of a pervasive "need-to-know in more precise detail." The hugeness of budgets and the sweeping scope of federalized planning affecting each community has made detailed local knowledge vital. Local detail impossible of metropolitan coverage.

Leaders agree that with a half-trillion dollar debt and a quarter-trillion dollar national budget with virtually no funding less than a million for anything, it's time somebody took a pocketbook look at government. Federated women of Washtenaw County are going to do just that.

Personal Notes

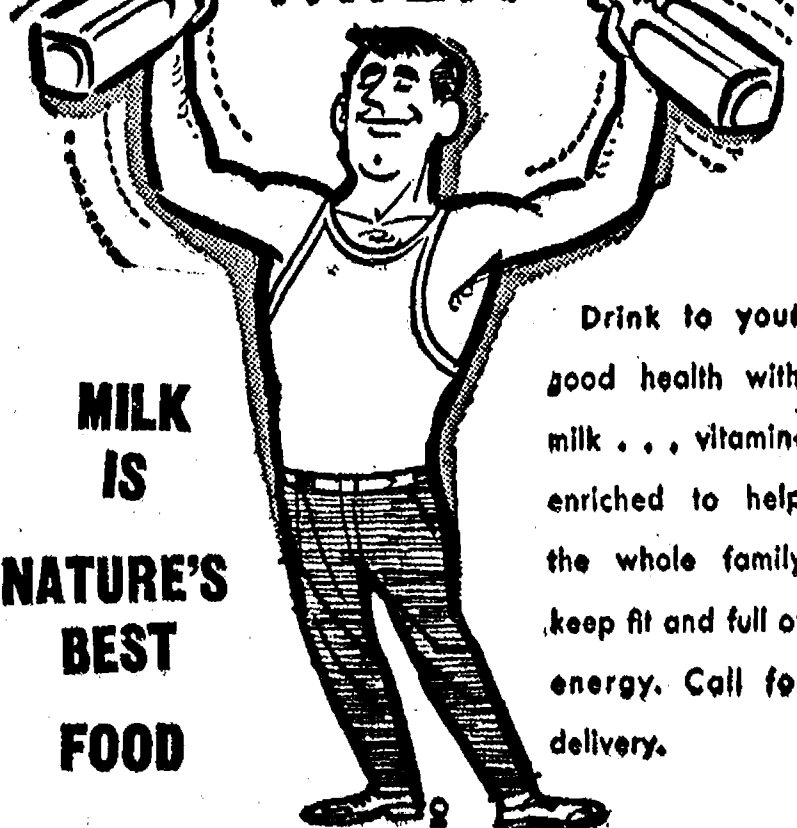
From Oct. 15-19, Mark Staphish, Joe Lantis, Mary Verchereau, and Suzanne Cox and her mother will attend the National Future Farmers of America convention in Kansas City.

Magic Mirror Beauty Salon

Open Tuesday thru Friday
9 a.m. to 9 p.m.
Saturday, 8 a.m. to 3 p.m.

PHONE 665-0816

KEEP FIT WITH MILK



Drink to your
good health with
milk... vitamin
enriched to help
the whole family
keep fit and full of
energy. Call for
delivery.

Hickory Ridge Farm Dairy

(Successor to Weinberg Dairy)
Stockbridge, Mich. Phone (517) 851-3000



Sherrie Terns, John W. Thomas Are Wed in Home Ceremony

Sherrie Terns and John W. Thomas were joined in matrimony at noon on Saturday, Sept. 29, before the fireplace in her parents' home, amid a blue and white color scheme of mums, carnations, gladioli and greenery.

Judge A. G. Elden of Ann Arbor conducted the double ring ceremony, which included music for the bride's entrance and a solo song by Michael Lobert of Ypsilanti, who accompanied himself on guitar.

The bride wore a full-length gown of white satin with lace bodice for the ceremony, accented by the bridegroom's bride gift of a pearl pendant. A pearl and lace-trimmed Juliet cap with full veil and matching lace adorned her head, while she carried a bouquet of white roses and stephanotis and baby's breath that was centered by a blue-ribboned "going away" corsage.

The bride's sister, Mrs. John Messer of Jackson, acted as matron of honor, and wore a Juliet-sleeved gown of blue chiffon and carried a bouquet of carnations and daisies in keeping with the blue and white color scheme.

The bridegroom chose Robert Doerr of East Lake, O., a friend, to be his best man.

The mother of the bride chose a full-length gown of powder blue lace and wore a cream-colored orchid corsage, while the mother of the bridegroom chose a multi-colored blue floor-length chiffon gown, also enhanced by cream-colored orchids.

Following the ceremony and champagne toast, the immediate family of 20 attended a wedding breakfast at the Sveden House in Jackson.

Out-of-town guests at the breakfast and ceremony were the bride's parents, Mr. and Mrs. W. R. L'Hullier of Charlevoix, the bridegroom's aunt, Mrs. Austin Grand of Everett, the wife of the best man, Mrs. Robert Doerr of East Lake, O., and the sister of the bridegroom, Miss Sharon Thomas, of Painesville, O.

The six o'clock buffet reception in the bride's home was attended by 150 guests. Miss Sharon Thomas cut the blue and white, 3 and 1/2 foot tall, four-tiered, decorated wedding cake.

Club and Social Activities

SENIOR CITIZENS
The Senior Citizens met Oct. 4 at the Corner House for their social evening after which refreshments were served by the committee.

The committee for the month's birthday and pot-luck dinner Oct. 18 is as follows: Leona Evans, Ruth Wenk, and Catherine Dorner. Several of the members helped to tie off a quilt this past week. Several are leaving for a tour which will end up at the Grand Old Opry. They will be joining others from Ann Arbor and Ypsilanti.

MODERN MOTHERS
Members of Modern Mothers Child Study Club met Tuesday, Oct. 9 at 7:30 p.m.

Mrs. Edwin Brown and Mrs. Peter Flintoft organized a "crafts" learning night. Five crafts were offered at individual homes and club members chose and attended the craft they wished to learn. All the crafts were taught by members of the club who had experience and talent in a certain area.

Crocheting was held at Pat Wilson's home and was taught by Lois Shively. Bakers clay figures was taught by Carol Flintoft in her home. Barb Brown taught pine cone wreath assembly at the home of Bobbie Johnson. The crafts will need two sessions and will be completed at the next meeting on Oct. 23.

Crafts that took only one session were also offered and members could then learn two crafts. Gloria Greenleaf taught the art of

making corn husk dolls in her home and braided rope hangings was taught by Amy Vaught in her home.

28 members became involved in learning a craft from one of the five teachers. At the meeting on Nov. 27, members will display the various crafts they have learned to make.

WOMAN'S CLUB
Woman's Club of Chelsea met Tuesday, Oct. 9 in the club room of McKune Memorial Library. Thirty-eight members and guests were present.

Following the regular business meeting, the group enjoyed a demonstration of arranging and use of dried flowers and weeds.

The program was presented by Mrs. Jeanette Otto of Gar-Nett's Flower and Gift Shop. Mrs. Otto was helpful, with suggestions on how to make homes more beautiful and interesting this fall through use of natural dried vegetation.

Hostesses for the evening were Mrs. James McLaughlin and Mrs. Theodore Spence.

Guests for the program included Mrs. Irwin, Mrs. Linda Ormsby, Mrs. Kathy Donovan, Mrs. Katherine Staffan, Mrs. Joyce Vogel, and Mrs. Jane Werdehoff.

CHILD STUDY CLUB
Twenty-eight members were present at this week's meeting at the home of Mrs. James Grau.

After the short business meeting, the program for the evening began. The program committee members led a workshop on home-made gift items to be sold at the group's Make and Bake sale Dec. 1.

Cider and doughnuts were enjoyed by members while working on the items.

Co-hostesses were Mrs. Robert Merkel and Mrs. Lynwood Noah.

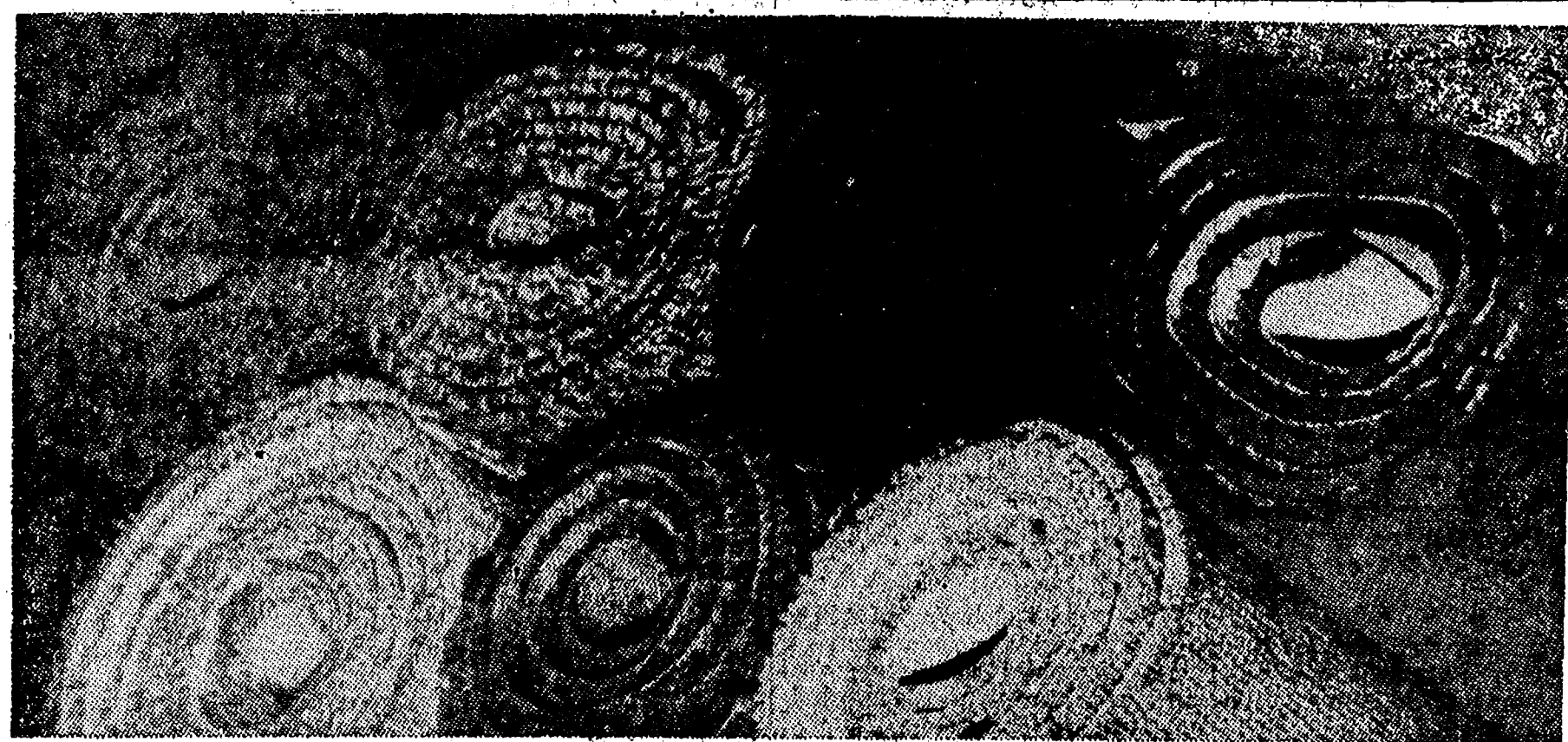
VILLAGE BEAUTY SALON

107 N. MAIN LORRETTA PHONE 475-1671

CHERYL - JANICE - CAROL - SUE

OPEN MONDAY THRU SATURDAY

Evenings By Appointment



IN STOCK

CARPET CLEARANCE

	Reg.	CLEARANCE
LEES • TEMPLE BELL Plain color. Shag, Plush, Zingy Olive, Vegas Sand, Meadow Haze, Pure Gold	\$10.95	\$7.95
WUNDA WEVE • THREE CHEERS Medium Shag, Nautical Blue, Special White, Amber Red, Spiced Apricot	\$6.95	\$4.95
GULLISTAN • HI-NOTE 24-oz. FHA approved, Nylon Shag, Avocado, Rust, French Blue, Nugget Gold	\$6.95	\$5.49
LAURELCREST • GRACIOUS LIVING Body Shag, Batik Brown, Honey Comb, Amber Gold	\$9.95	\$5.95
MOHAWK • MEXICANA HOLIDAY Tweed Shag Nylon, Light Magie, Sunlit Moss, Shibui Garden, Lagoon, Gold Spice, Temple Flame	\$8.95	\$5.95
TREND ARGYLE Low Level Nylon Rubber Back Tweed, Olive, Blue Green	\$4.95	\$3.39
WUNDA WEVE • CRYSTAL SPRINGS Tweed Splush, Antique Gold, Canyon Rust	\$10.95	\$7.95

OMALON SYSTEMS II

PADDING

Reg. \$2.49 SALE \$1.79

FREE ESTIMATES

Call 475-8621

TERMS. Up to 42
Months To Pay.

MERKEL Home Furnishings

Your Diamond Is Trade-Able So Why Wait?

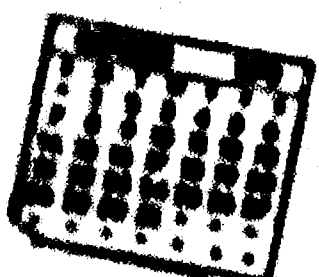


There's no better time to trade your diamond. Choose a magnificent new Keepsake. A perfect diamond of superb white color and correct modern cut. Permanently registered and protected against loss.

Keepsake
REGISTERED DIAMOND RINGS

WINANS JEWELRY

Rings enlarged to show detail. Trade-Mark Reg.



Inquiries regarding the Chelsea blood bank may be directed to Harold Jones in the event that Mrs. Dudley Holmes is unavailable, or to Mrs. Pauline McKenna, American Red Cross in Ann Arbor, 71-5300.

Flea market: Antiques, art and hobby items. Bake sale every Saturday. North Lake United Methodist church yard. 10 a.m. to 4 p.m.

Funeral services will be conducted Friday, Oct. 12, at 2 p.m. at the Staffan Funeral Home, by the Rev. Clive H. Dickens. Burial will follow in Oak Grove Cemetery.

CELEBRATE
Celebrate October's Porkfest
with a Bavarian masterpiece — a
platter of sliced boneless smoked
pork shoulder with sauerkraut,
potatoes and onions.

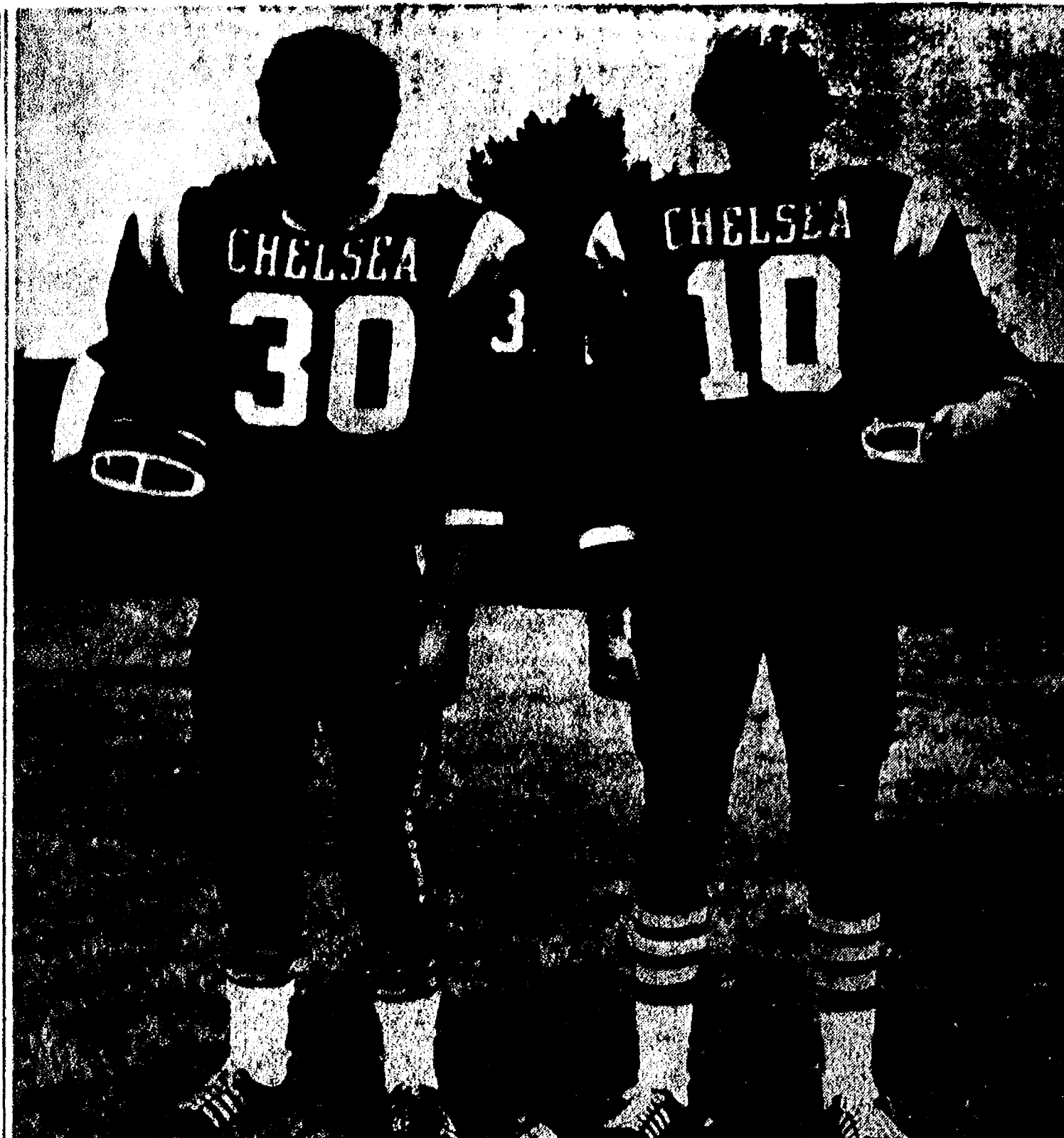
BEAUTIFY AND MODERNIZE YOUR BATH AREA

\$33.95



CHELSEA LUMBER CO.

111 PARK STREET
CHELSEA, MICH.



STEVE KINCER (30) is a junior fullback playing his first year as a varsity Bulldog, although he played junior varsity last year and participated in teams in 7th and 8th grades. In the spring he intends to play baseball, which he played last year; he also has been active as a wrestler. Because of his participation on the varsity squad, he is unable this year to march with the Band, for which he previously played drums. Steve lives at home with his parents, Mr. and Mrs. Bruce Kincer, at 3180 Conlin Rd., with one brother, Ben, in 7th grade at Beach Middle school, and two sisters, Penny, a sophomore at Chelsea High, and Elizabeth, a first grader at North Elementary. A brother, Bruce, and sister, Theresa, attend out-of-state colleges.

TODD ORTBRING (10) is a 5'10" quarter-back who weighs in at 140 lbs. A junior, Todd is presently playing his first year of varsity football but played junior varsity last year and has been active locally in the sport since 7th grade. He has also played baseball all through high school, and intends to participate again this coming season. He is uncertain whether he will again go out for basketball, which he played for the first time in his sophomore year. Todd, the son of Mr. and Mrs. Henry E. Ortring of 20232 Scio Church Rd., has three brothers and three sisters.

Mr. and Mrs. Lynn Cooper and Mrs. Betty Lorrey will host the event, planned for Oct. 15-18.

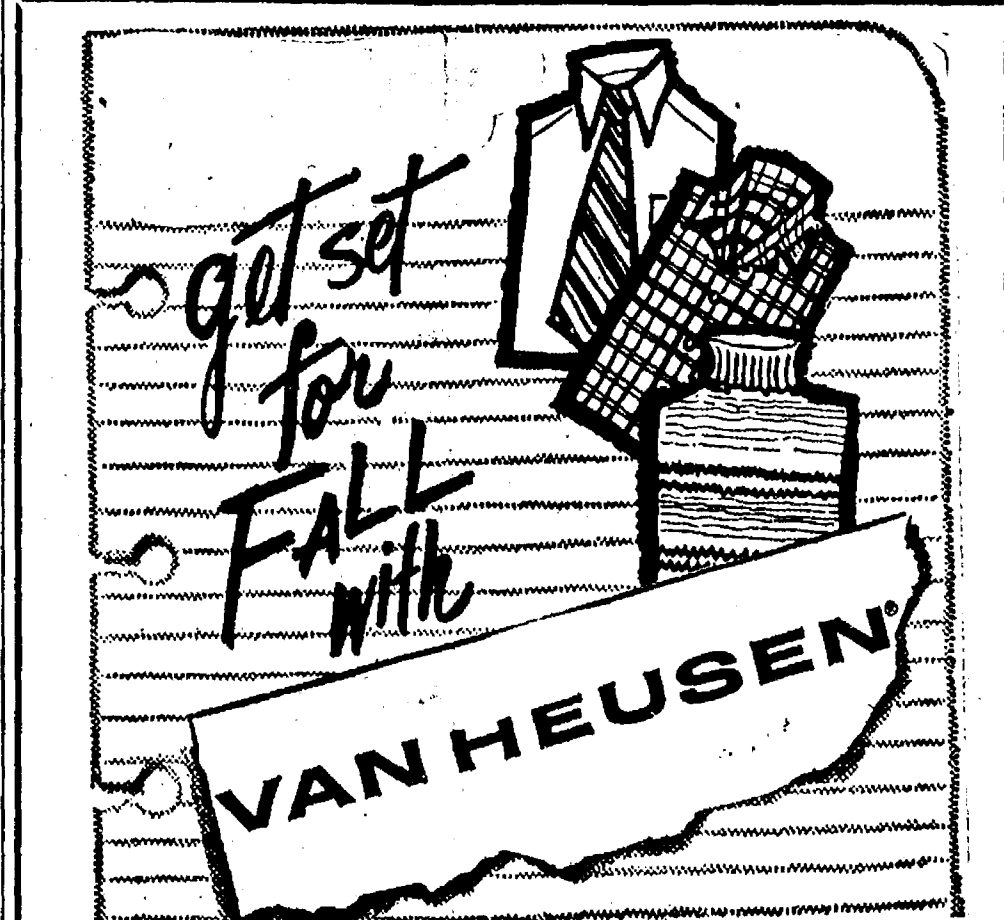
It is the first time Michigan agricultural business sectors have organized in individual campaigns in support of

Subscribe today to The Standard

Cemetery, Royal Oak. Arrangements were by Staffan Funerals Home.

A smart shopper will follow the grocery ads and freeze for future pork cuts that are featured as specials. Fresh pork cuts can be kept in the freezer for 3 to 6 months when wrapped for freezing and stored at 0 degrees Fahrenheit or lower.

**111 PARK STREET
CHELSEA, MICH.**



STRIETER'S MEN'S WEAR

"The Place To Go
For Brands You Know"

Fashionable fabrics for girls' summer fashions include seersucker, chambray, denim, corduroy, cotton and acrylics.



Meet me on page 10.

NOW ONLY
\$459⁹⁵

EARLY BIRD SNOW TIRE SALE

BELTED TO GET YOU THERE AND BACK



Sonic SUPER TRAC
SNOW TIRE

**FIBERGLASS
DUAL BELTS**
keep tread open
to plow through
deepest snow.

**FULL POLYESTER
TIRE CORD PLIES**
for soft ride yet
offers stronger

Size	Price	Ex. Tax
F78-14	\$24.12	\$2.50
G78-14	25.63	2.75
H78-14	27.35	2.90
G78-15	26.29	2.75

plus quicker starts
and super stops.

G78-15	28.28
M78-15	27.58
J78-15	29.65
L78-15	30.66

The ultimate in Trac for all winter driving.

AVAILABLE ONLY
ON OPTIMA

**Sale Positively
ends Wednesday,
Oct. 24, 1973**



PALMER FORD

**61 Years Your Ford Dealer
Since April 1912**

475-1301



1101 M-52, Chelsea
Corner of M-52 and Old US-12
OPEN: 8 to 10 Daily
8 to 7 Sunday

THE
PRICE
BUSTERS

POLLY'S, THE COMPLETE SERVICE
PEOPLE FEATURE ONE-STOP
SHOPPING...

SAME DAY DRY CLEANING SERVICE
PHOTO SERVICE CENTER
FRESH BAKED GOODS
BAKED FRESH DAILY AT OUR
POLLY'S ALPINE BAKERY

WEDDING COMING UP?

Check Our Price on Wedding Cakes!

By Popular Demand Polly's Will Continue Their
Beef Sale One More Week — Don't Miss It!

FRESH GROUND LEAN ALL BEEF	HAMBURG	Reg. \$1.29 Lb.	99¢
USDA CHOICE CENTER CUT	SIRLOIN STEAK . . .	Reg. \$1.99 Lb.	\$1 ⁵⁸
USDA CHOICE CENTER CUT	ROUND STEAK . . .	Reg. \$1.79 Lb.	\$1 ⁴³
USDA CHOICE WELL TRIMMED	T-BONE STEAK . . .	Reg. \$2.39 Lb.	\$1 ⁹¹
USDA CHOICE	Porterhouse Steak . .	Reg. \$2.49 Lb.	\$1 ⁹⁹
USDA CHOICE	RIB STEAK	Reg. \$1.89 Lb.	\$1 ⁵¹

USDA CHOICE CENTER CUT BLADE	CHUCK ROAST . . .	Reg. \$1.19 Lb.	68¢
USDA CHOICE	Arm Cut Chuck Roast	Lb.	\$1 ¹⁹
USDA CHOICE	English Chuck Roast.	Lb.	\$1 ⁰⁹
OVEN READY 4-7 RIB	RIB ROAST	Lb.	\$1 ³⁵
BONELESS	STEW BEEF lb.	\$1.29	
BONELESS	CUBE STEAK lb.	\$1.51	
BONELESS	RUMP ROAST lb.	\$1.51	
BONELESS	Sirloin Tip Steak lb.	\$1 ⁵⁸	

BEEF SIDES lb. 89¢ ALL FREEZER ORDERS CUT, WRAPPED, FROZEN NO EXTRA CHARGE. BEEF HINDS lb. 99¢



DELMONTE HARVEST SALE

DEL MONTE CREAM OR WHOLE KERNEL	CORN	16-Oz. Cans	5 for \$1.00
DEL MONTE EARLY GARDEN	SWEET PEAS	16-Oz. Cans	4 for \$1.00
DEL MONTE	STEW TOMATOES	16-Oz. Cans	4 for \$1.00
25-FT. ROLL REYNOLDS	ALUMINUM FOIL		25¢
12-OZ. CANS	COCA-COLA	12 pac	\$1 ⁵⁹
ECO 2 PAK	BATH TISSUE		5 for \$1.00
22-OZ. LUX	LIQUID DETERGENT		39¢
WHITE OR DECOR	GALA TOWELS	2 pak	37¢
SOFT SPREAD	IMPERIAL MARGARINE . lb.		47¢
9-OZ. AERATED	LUCKY WHIP TOPPING .		39¢
LIPTON	CHICKEN NOODLE ONION TOMATO	3 for	\$1.00

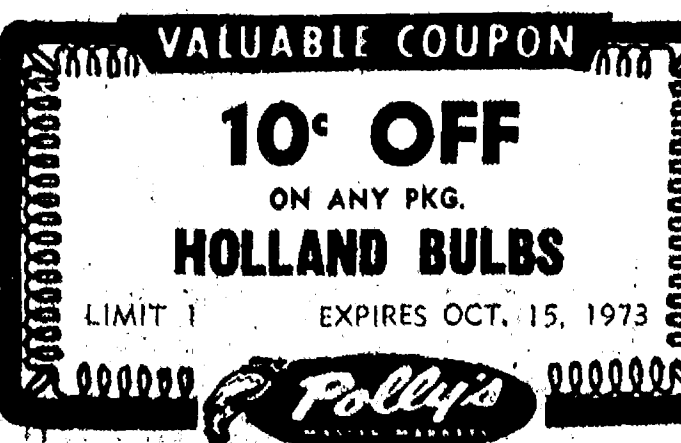
FROZEN FOOD VALUES

QUEEN OF SCOTT 100% PURE	ORANGE JUICE	6-Oz. Can	39¢
10-OZ. PKG.	GREEN GIANT PEAS . 3 for		\$1.00
10-OZ. PKG. GREEN GIANT	NIBLET CORN, GREEN BEANS 3 for		\$1.00
	BORDEN FUDGE BARS	12 Pac	49¢
	ONION RINGS	Butter Breaded 2-Lbs. Pak	\$1 ¹⁹

GARDEN FRESH FRUITS & VEGETABLES

Are Appreciated. We at Polly's Know This!

GARDEN FRESH CALIFORNIA	HEAD LETTUCE	Large Head ea.	18¢
BUTTERNUT, ACORN, HUBBARD OR BUTTERCUP	SQUASH	Lb.	8¢
U. S. NO. 1	LOUISIANA YAMS	Lb.	18¢
MICHIGAN FLAVORBEST	RED DELICIOUS APPLES . .	3-Lb. Bag	68¢
ASELTINE'S PASTEURIZED PURE	APPLE CIDER	gal.	\$1.49



The Chelsea Standard

Second Section—Pages 7-14

CHELSEA, MICHIGAN, THURSDAY, OCTOBER 11, 1973



ROBERT TOY, son of Mr. and Mrs. William Toy of 16930 Dutton Rd., is a new member of the Michigan State University Marching Band. He stands with Kenneth Bloomquist, director. A 1973 graduate of Stockbridge High School, Toy is an MSU freshman majoring in accounting.

College-Career Night Set Tuesday at DHS

Recognizing that "It's pretty hard for a high school counselor to know the ins and outs of the 88 Michigan colleges," counselor Duane Clark of Dexter High School has announced the schedule for his school's college and career night planned for Tuesday, Oct. 16, at 7:30 p.m.

Clark says that area high schools invited to attend the presentation include Chelsea, Milan, Saline, Whitmore Lake, Pinckney, Manchester, Ann Arbor St. Thomas and Lincoln. Students in grades 9 through 12, and their parents, are included in the invitation.

Format for the evening will be the familiar three-session arrangement, during which participants will be able in each session to consult a different representative from their parents to speak directly to college and career areas for a 30-minute informal question and answer period.

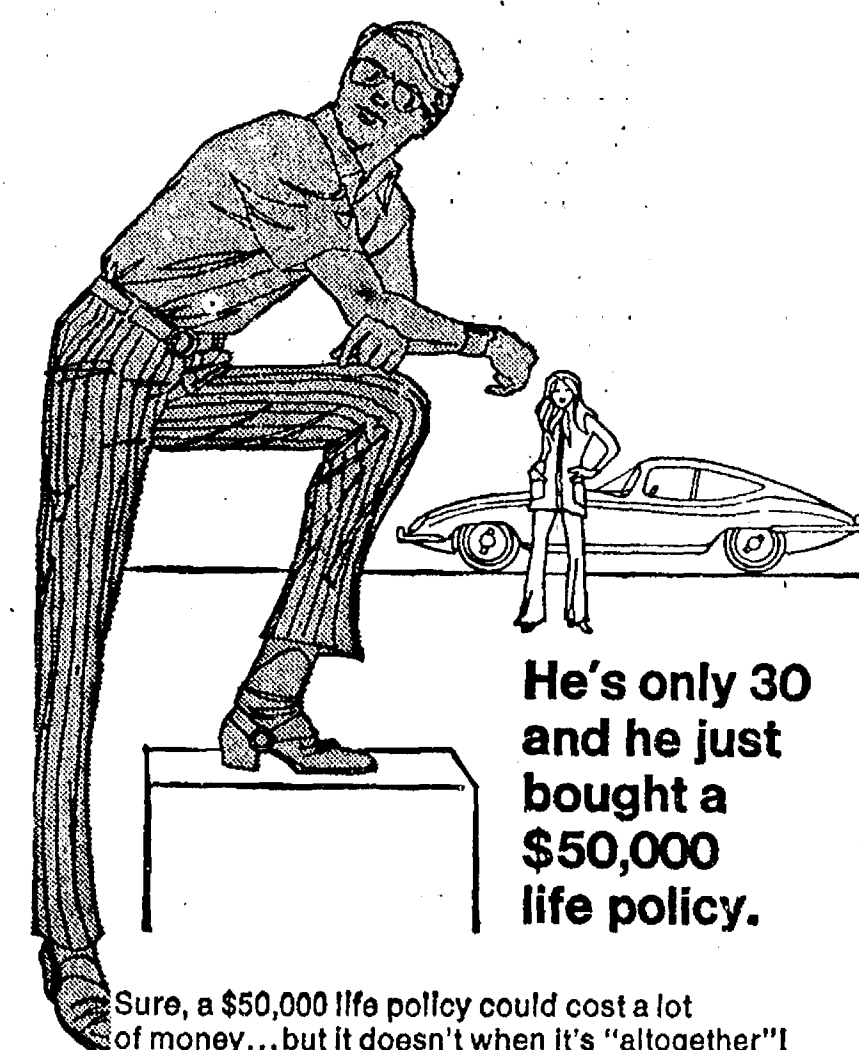
Although the evening is billed as a "college and career night," career representatives are rather lacking this year, as only cosmetology, nursing, and vocational education technology speakers will be available.

A multitude of college representatives will be on hand, however, including individuals from University of Michigan, Michigan State University, Eastern Michigan University, Western Michigan University, Central Michigan University, Alma College, Adrian College, Ferris State College, Washtenaw Community College, Jackson Community College, Cleary College and Jackson Business College. Representatives from the United States military academies are also expected.

Clark says that previous attendance for the event, which annually rotates among the area high schools, has been from 200 to 300 students and parents. "We hope particularly that seniors in the process of determining their future will attend," he noted. "This evening will allow both them and the admissions officers of schools they might be interested in."

Other colleges which will be represented are Lansing Business College, Kendall School of Design, Alexander's School of Cosmetology, Practical Nursing program, Foote and UM Hospital School of Nursing, General Motors Institute, Lake Superior College.

Also Madonna and Aquinas Colleges, Michigan Tech., Olivet, Michigan Agricultural Technical programs, Jackson Community College and Northern Michigan University.



Sure, a \$50,000 life policy could cost a lot of money...but it doesn't when it's "altogether"! When we say "altogether" we mean Perma-Term — permanent and term insurance combined to avoid those big premiums, but still deliver the big protection young family men need. It means you could have a \$50,000 policy which lets you build up a retirement income at the same time! Yes, Perma-Term's easier on the budget, but please remember that costs go up as you grow older. So give us a call now — before another birthday gets past you altogether!

it's better
altogether

A. D. MAYER AGENCY, INC.

115 PARK ST., CHELSEA
BOB BARLOW, AGENT
PHONE 475-2030



Auto-Owners Life Insurance Company

At
Takes
The 1st
Tuesday

USE ACTION-PACKED WANT ADS

Just
Phone
475-1371

WANT ADS

The
Chicago Standard
GIVE UP BATES

THORNTON
475-8628

IDEAL for the small family 2-
bedroom, check close to high
school. Very modern in design and
most enjoyable for living.

RETIRE to the country and enjoy
your life. Living in the
great country with good access to
South Lake. A sharp 2-bedroom
with a large, large garage.
Incredible opportunity.

CUSTOM BRICK CONTEMPORARY—Fabulous home close to
high school, children's area designed
for maximum effect. Great master
bedroom and living area. Owner
moves.

HALF MOON LAKE—Lots of
rooming room, 3 bedrooms, family
room, fireplace and a "mother-
in-law" apartment. Amazing.

NORTH LAKE FARM—Brick and
aluminum colonial, new, many
custom features, corner lot with
circular driveway. A lovely home.

HORSE FARM—13 acres, good
barn, coral, 3-bedroom ranch
home fully carpeted, beautiful.

RUSTIC RANCH—Sited on
wooded lot in quiet area of quality
homes. 3 bedrooms, 2 baths and
many many extras.

COUNTRY FARM HOUSE—3
acres, 3 bedrooms, small barn,
chicken coop, some trees.

STately COLONIAL—Beautiful
large home in Village of
Stockbridge, 12 rooms, wooded lot.
A great setting.

HORSE BARN—Plus Marlette mobile
home furnished and on one
acre. \$18,000.

ACREAGE:
2 ACRES—Rolling, wooded.
10 ACRES—Rolling.
12 ACRES—Rolling, fronting on
small lake.
16 ACRES—Wooded building site,
pond potential.
78 ACRES—House, barn, crops.
90 ACRES—House, barn, rolling.

ROBERT H.
THORNTON
JR., P.C.
REALTOR

828 S. Main, Chelsea 475-8628
Even:
Helen Lancaster 475-1198
Bob Riemenschneider 475-1469
John Plerson 475-2064
Bob Thornton 475-8867

OLAN MILLS Photography Studio
is looking for people interested
in part-time telephone sales work.
Hourly pay plus bonus incentive.
No experience necessary, will
train. Contact Lorraine at 769-
8603, Monday-Friday, 9 a.m.-3 p.m.

WANT ADS

FORMAL WEAR
RENTAL SERVICE
Proms - Weddings - Special Events
in different colors.

Foster's Men's Wear

FOR SALE
CAYANAUGH LAKE
10-acre cottage
lake-front.
200' deep lake.
Shown by appointment only.

EVELYN WHITE
475-7311 after 5 p.m.
BOY D. MILLER, Broker
475-7311

Special of the Week
1970 Plymouth Satellite 2-dr.
Hardtop
25,000 miles
\$1595

USED CARS
1978 BUICK Century 2-dr. hard-
top, air cond. \$1195
1973 PONTIAC Catalina 4-dr. se-
dan, air cond. \$1795
1972 BUICK LeSabre 4-dr. hardtop.
\$1695
1971 BUICK LeSabre 4-dr. sedan.
\$2095
1971 CHEV Impala 4-dr. sedan, air
cond. \$1695
1970 FORD TORINO 2-dr. hard-
top \$1495
1970 FORD Fairlane 500 2-dr. hard-
top, air cond. \$1105
1970 CHEV Impala 2-dr. hard-
top, air cond. \$1095
1969 FORD Torino GT 2-dr. hard-
top, 4-speed \$1095
1968 BUICK Skylark 4-dr. sedan,
air cond. \$1195
1968 OLDS Delmont 88 4-dr. se-
dan \$595
1968 OPEL wagon \$595
1964 PONTIAC Catalina 2-dr.
hardtop \$195

Sales & Service—Mon., Tues., Wed.
and Fri. 8:00-5:30
Thurs. till 9:00
Sales—Saturday 8:00-3:30
Sales—Open evenings
by appointment.

SPRAGUE
Buick-Olds-Opel, Inc.
Phone 475-8664
1600 S. Main St., Chelsea

MEN'S
DRESS & WORK
SHOES
See what's new.
Selection is
good now.

DANCER'S

YARD SALE—Oct. 18 and 19.
Several families. 213 N. Mc-
Comb St., Manchester.

WANT ADS

KNAPP SHOES
For Custom Comfort
Robert Robbins
475-7282

FOR SALE—1970 Dodge Coronet
R.T. \$11,800 Call 475-7219-12

Demos at
Tremendous Savings

73 DART 340 Sport, auto, p.s.,
Sure-Grip, buckets, Rallye. Save
73 DUNTER, 318, auto, p.s., p.b.,
air cond, Gold Duster pkg.,
space-maker. Save
73 CHARGER 2-dr. hardtop, 318,
auto, p.s., p.b., air condition,
AM-FM, vinyl roof.
73 PLYMOUTH Fury III 4-dr. se-
dan, 360, auto, p.s., p.b., air
cond., vinyl roof, 5,000 miles.
Drive-Ed. car.

Quality Used Cars
73 SCAMP 2-dr. hardtop, 318 V-8,
auto, p.s., vinyl roof, 3 new
tires, 15,000 miles \$2795
73 CHEVY 1/2-ton pick-up, 350 V8,
auto, p.s., p.b., Sure-Grip, low
mileage \$2005
72 FORD Sheriff car, 4-dr. sedan,
V-8, auto, p.s., p.b., excellent
transportation \$1395
70 FORD Club Wagon van 6-
cyl. auto, 8-pass. \$1695
70 FORD Galaxy 500 4-dr. sedan,
V-8, auto, p.s., p.b. \$995
70 DODGE Coronet Crestwood, 9-
pass. wagon, 318, auto, p.s.,
p.b., air cond. \$1295
69 CHRYSLER New Yorker 4-dr.,
full power, air cond, vinyl
roof \$795
68 CHEVY Impala SS, V-8, auto,
good transportation \$895
67 DODGE 1/2-ton pick-up, 318
V-8, auto. \$495

Transportation
Specials
64 FORD 4-dr., V-8, auto, p.s.
\$395

Cry-Star
Van Conversion
now in stock.
Completely equipped.

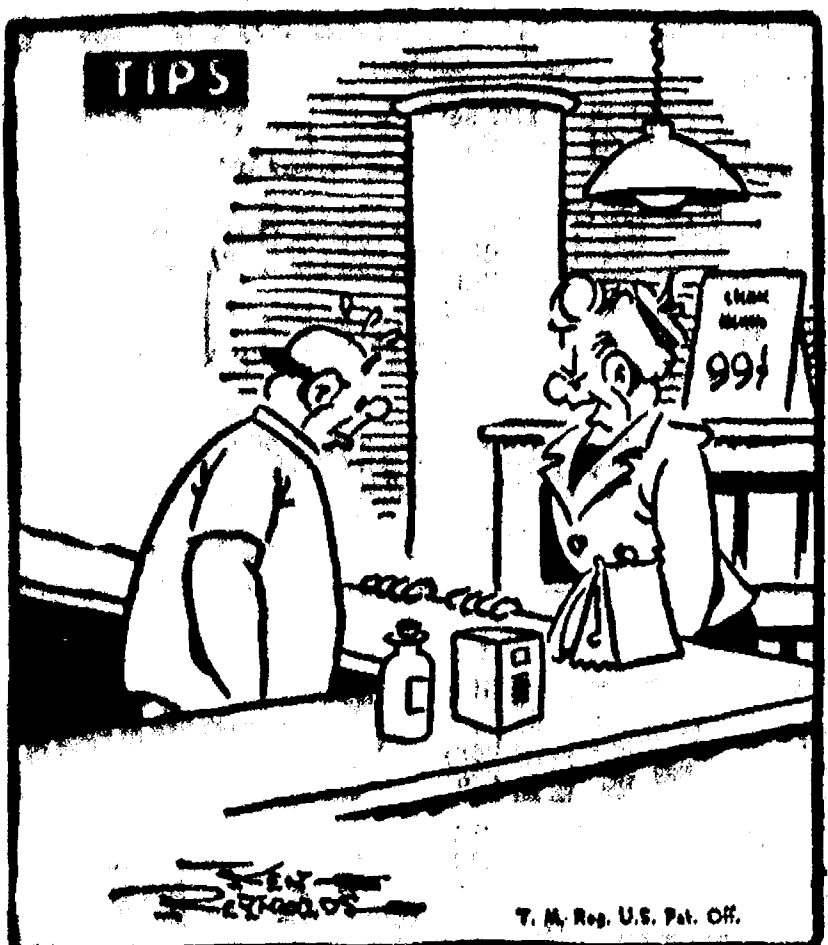
Village
Motor Sales, Inc.
IMPERIAL - CHRYSLER
DODGE - PLYMOUTH
Phone 475-8661
1185 Manchester Rd., Chelsea
Hours: 8 a.m. to 6 p.m.
Tues. thru Fri. Until 9 Monday.
9 a.m. to 2 p.m. Saturday

Sylvan Township
15-ACRE parcel. Chelsea schools.
Excellent building location.
13 ACRES with flowing stream.
Terms.
4-BEDROOM brick home, 2-car ga-
rage, 7-acre lot, \$85,000, part
down.
List your property with us for fast,
efficient service.

R. D. MILLER
REAL ESTATE
Real Estate Broker
475-7311
16775 Cavanaugh Lake Rd.
Chelsea, Mich.
EVELYN WHITE
475-7351

GAR - NETT'S
Flower & Gift Shop
Your Friendly Florist
112 E. Middle St., Chelsea
PHONE 475-1400
Funeral Flowers
Wedding Flowers
Out Flowers (arranged or boxed)
Potted Flowering Plants
Green Plants - Corsages
WE DELIVER

ELECTROLUX
VACUUM
CLEANERS
SALES and SERVICE
JAMES COX
Ph. 428-2931 or 428-8686
Manchester



"Stand up and tell the men you want the vitamins I saw
in his Standard Want Ad!"

WANT ADS

HILLTOP, INC.
Septic tanks: 600 gal. to 2,000 gal.,
and drain fields, installed to
county code. Basements: road build-
ing; trenching, 12" and up. Buried
oil tanks: 300, 500, and 1,000 gal.
Trucking, stone, road gravel, and
top soil. Estimates and reasonable
rates. Licensed, bonded and insur-
ed.
1414 South Main
Chelsea, Mich.
475-2849
WILL BABYIT weekdays in my
home. 475-1688.

Quality Evergreens
Spreading and Hicks yew, Pyramid
and Globe Arbor Vitae, Pfitzer,
Also Mountain Ash, Flowering
Crab, Crinum King and Norway
Maples. Dig your own. State in-
spected. Free estimates.

Faist's
Evergreen Nursery
11822 Trist Rd.
Grass Lake, Michigan
Phone (617) 522-4588

STORAGE
Trailers, campers, motor homes,
boats, etc. Fenced, lighted, lock-
ed, protected. 449-4312.

SANDE'S
TEXAS TACK
12005 Seio Church Rd.
Corner Lima Center Rd.
Chelsea, Mich.
Lee jeans, shirts, jackets.
Riding equipment for the
western horse.
FALL SADDLE SALE
475-2596
4-H Club members, 10% discount.
Open 7 Days A Week.

Big Selection
of new
Yard Goods
Zipper, Thread
Notions
New for fall.
SEW & SAVE!
BASEMENT
DANCER'S

REAL ESTATE
WELL DESIGNED—Newer 3-bed-
room Chelsea home. Separate
dining room. Family room with
planter and brick fireplace. 2-car
garage. Part down and balance on
land contract.
EXCELLENT BUILDING SITE
overlooking Inverness Golf
Course. A perfect spot for your
dream home. \$7,500, terms.
CLARENCE WOOD
BROKER
646 Flanders St.
Phone 475-2093

Listen to that "all's-well" purr
Your car's engine will "purr"
with contentment after our ex-
perts change the oil and give it
a good lubrication.
Sweet music to your ears is the purr
of your engine, sure promise of pep,
power and performance after our
servicers drain the sludge and fill
the crankcase of your car with highest
quality PURE oil.
UNION 76 PETROLEUM PRODUCTS
Jim's Union 76 Service
Tires — Batteries — Tune-Ups — Brake Service — Wheel Alignment
PHONE 475-2822 501 SOUTH MAIN

WANT ADS

FOR SALE—Hamilton gas dryer,
large capacity Kenmore auto
washer, 16-ft. aluminum boat,
trailer, 9 1/2 h.p. Johnson outboard
(like new). Phone 475-1853. x17

CHELSEA

COUNTRY LIVING
\$32,000—Grass Lake area, 3-bed-
room ranch, family room, dining
room, 1 1/2 baths. Great view of golf
course.
\$38,900—Half Moon Lake, 3-bed-
room, 4-year-old ranch, 2 1/2-car
attached garage.
\$26,500—North Lima Center Road,
1 bedroom, 5 acres, new homes in
the area.
\$33,500—2.7 acres, 2-bedroom, fam-
ily room, garage, workshop,
barn.
\$27,000—Stockbridge, 2-bedroom
Cape Cod, breezeway, 2 1/2-car at-
tached garage.
\$16,000—Chelsea schools, 4 acre, 1
-bedroom. Beautiful big trees.
NEW—3-bedroom, dining room,
family room, fireplace, 2 1/2 baths,
2-car attached garage, 10 acres.
VILLAGE OF CHELSEA, \$30,500
—3-bedrooms, dining room, fam-
ily room, fireplace, aluminum sid-
ing, nice landscaping.

FARMS
196 ACRES, barns, outbuildings, 5
-bedroom home, well kept farm,
Chelsea schools.
40 ACRES, barn, outbuildings, 2
-bedroom home, Dexter schools.
71 ACRES, 8 stall horse barn, 4
-bedroom home, Ann Arbor
schools.
VACANT—Various parcels rang-
ing from 1 1/2 to 117 acres per
parcel.

FRISINGER
REALTORS
Chelsea 475-8681
Ann Arbor 769-8877
Evenings:
Paul Frisinger 475-2821
Toby Peterson 475-2718
Hope Bushnell 475-7180
Herman Koenig 475-2613
Mary Ann Staebler 475-1432
Tina Cottor 475-7143
George Frisinger 475-2903

REAL ESTATE
WELL DESIGNED—Newer 3-bed-
room Chelsea home. Separate
dining room. Family room with
planter and brick fireplace. 2-car
garage. Part down and balance on
land contract.
EXCELLENT BUILDING SITE
overlooking Inverness Golf
Course. A perfect spot for your
dream home. \$7,500, terms.
CLARENCE WOOD
BROKER
646 Flanders St.
Phone 475-2093

WANT ADS

CLOGGED
SEWER
Reynolds Sewer
Service
We Clean Sewers Without Digging
Drains Cleaned Electrically
FREE ESTIMATES
2-YEAR GUARANTEE
Phone Ann Arbor NO 2-5277
"Sewer Cleaning Is Our Business—
Not a Sideshow" 88tf

Attention
High School
Graduates
K-Mart's Men's Wear Dept. is look-
ing for an ambitious high school
graduate. Fast advancement. Com-
pany paid Blue Cross and Blue
Shield. Other company benefits.
Inquire at
K-MART
215 N. Maple Rd.
Ann Arbor, Mich.
Monday - Friday, 10-5

HOUSE FOR RENT—2-bedroom
home at secluded Half Moon
Lake. Carpeting, range, refrigera-
tor, and gas forced-air furnace.
Workshop, tool shed, large garden
and fruit trees. Available Nov.
1, couple preferred. No children
or pets. \$275 per month. 475-
2186 evenings and week-ends.

CARETAKER
WANTED
for
McKune
Memorial Library
One bedroom apartment in ex-
change for maintenance of build-
ing and grounds.
Apply at the Library Monday
through Saturday, 12 noon to 5 p.m.
221 S. Main Street, Chelsea.
Phone 475-7049

A fine selection of
New and Used Cars
for immediate delivery
Harper Pontiac
Sales & Service
475-1306
Evenings, 475-1608

HELP WANTED
Manager for Appliance Dept. of a
large local discount store. Ex-
perience not necessary, but is de-
sirable. General benefits and start-
ing salary.
Inquire at
K-MART
215 N. Maple Rd., Maple Village
Ann Arbor
Mon. - Fri., 10-5

Supervisor
FOOD SERVICE
Full-time, 11:30 a.m. to 8 p.m.
shift. Extensive kitchen experi-
ence required. Good wages, fringe
benefits, excellent working con-
ditions.
Contact Mrs. Dettling
475-1311
Food Service Director
Chelsea
Community Hospital
An Equal Opportunity Employer
BAZAAR—United Methodist church
at Waterloo. Oct. 19 and 20, 10
a.m. to 5 p.m. Doll clothes, hand-
made items, bake sale. Many more
items, come and see them.
FOR SALE—Hand-made hairpin
lace afghan, 84"x44". Make good
Christmas gift. 498-2471.

Men's
JEANS & SLACKS
Famous Name
Brands
1/2 and more off
BARGAIN FLOOR
DANCER'S

Signs Painted
475 - 7391
1971 HONDA CL 450. Excellent
condition, low mileage, extras.
Ph. 475-2154.

SNOW
BOOTS
SNOWMOBILE
BOOTS
The selection and size
are good now.
Don't wait too long.
DANCER'S

Chelsea
Rod & Gun Club
HARD TIMES
DANCE
Saturday, Oct. 20
9 p.m. to 1:30 a.m.
Music by
JOE PRATER
and
"The Huron Valley Boys"
Snacks - Set-Ups - Ice
and lunch furnished.
\$8.00 per couple
For tickets call Tom Franklin

WATERLOO REALTY
JoAnn Warywoda
BROKER
Phone 475-8674

Supervisor
FOOD SERVICE
Full-time, 11:30 a.m. to 8 p.m.
shift. Extensive kitchen experi-
ence required. Good wages, fringe
benefits, excellent working con-
ditions.
Contact Mrs. Dettling
475-1311
Food Service Director
Chelsea
Community Hospital
An Equal Opportunity Employer
BAZAAR—United Methodist church
at Waterloo. Oct. 19 and 20, 10
a.m. to 5 p.m. Doll clothes, hand-
made items, bake sale. Many more
items, come and see them.
FOR SALE—Hand-made hairpin
lace afghan, 84"x44". Make good
Christmas gift. 498-2471.

Men's
JEANS & SLACKS
Famous Name
Brands
1/2 and more off
BARGAIN FLOOR
DANCER'S

Supervisor
FOOD SERVICE
Full-time, 11:30 a.m. to 8 p.m.
shift. Extensive kitchen experi-
ence required. Good wages, fringe
benefits, excellent working con-
ditions.
Contact Mrs. Dettling
475-1311
Food Service Director
Chelsea
Community Hospital
An Equal Opportunity Employer
BAZAAR—United Methodist church
at Waterloo. Oct. 19 and 20, 10
a.m. to 5 p.m. Doll clothes, hand-
made items, bake sale. Many more
items, come and see them.
FOR SALE—Hand-made hairpin
lace afghan, 84"x44". Make good
Christmas gift. 498-2471.

Men's
JEANS & SLACKS
Famous Name
Brands
1/2 and more off
BARGAIN FLOOR
DANCER'S

Supervisor
FOOD SERVICE
Full-time, 11:30 a.m. to 8 p.m.
shift. Extensive kitchen experi-
ence required. Good wages, fringe
benefits, excellent working con-
ditions.
Contact Mrs. Dettling
475-1311
Food Service Director
Chelsea
Community Hospital
An Equal Opportunity Employer
BAZAAR—United Methodist church
at Waterloo. Oct. 19 and 20, 10
a.m. to 5 p.m. Doll clothes, hand-
made items, bake sale. Many more
items, come and see them.
FOR SALE—Hand-made hairpin
lace afghan, 84"x44". Make good
Christmas gift. 498-2471.

Men's
JEANS & SLACKS
Famous Name
Brands
1/2 and more off
BARGAIN FLOOR
DANCER'S

Supervisor
FOOD SERVICE
Full-time, 11:30 a.m. to 8 p.m.
shift. Extensive kitchen experi-
ence required. Good wages, fringe
benefits, excellent working con-
ditions.
Contact Mrs. Dettling
475-1311
Food Service Director
Chelsea
Community Hospital
An Equal Opportunity Employer
BAZAAR—United Methodist church
at Waterloo. Oct. 19 and 20, 10
a.m. to 5 p.m. Doll clothes, hand-
made items, bake sale. Many more
items, come and see them.
FOR SALE—Hand-made hairpin
lace afghan, 84"x44". Make good
Christmas gift. 498-2471.

Men's
JEANS & SLACKS
Famous Name
Brands
1/2 and more off
BARGAIN FLOOR
DANCER'S

Supervisor
FOOD SERVICE
Full-time, 11:30 a.m. to 8 p.m.
shift. Extensive kitchen experi-
ence required. Good wages, fringe
benefits, excellent working con-
ditions.
Contact Mrs. Dettling
475-1311
Food Service Director
Chelsea
Community Hospital
An Equal Opportunity Employer
BAZAAR—United Methodist church
at Waterloo. Oct. 19 and 20, 10
a.m. to 5 p.m. Doll clothes, hand-
made items, bake sale. Many more
items, come and see them.
FOR SALE—Hand-made hairpin
lace afghan, 84"x44". Make good
Christmas gift. 498-2471.

Men's
JEANS & SLACKS
Famous Name
Brands
1/2 and more off
BARGAIN FLOOR
DANCER'S

Supervisor
FOOD SERVICE
Full-time, 11:30 a.m. to 8 p.m.
shift. Extensive kitchen experi-
ence required. Good wages, fringe
benefits, excellent working con-
ditions.
Contact Mrs. Dettling
475-1311
Food Service Director
Chelsea
Community Hospital
An Equal Opportunity Employer
BAZAAR—United Methodist church
at Waterloo. Oct. 19 and 20, 10
a.m. to 5 p.m. Doll clothes, hand-
made items, bake sale. Many more
items, come and see them.
FOR SALE—Hand-made hairpin
lace afghan, 84"x44". Make good
Christmas gift. 498-2471.

Men's
JEANS & SLACKS
Famous Name
Brands
1/2 and more off
BARGAIN FLOOR
DANCER'S

Supervisor
FOOD SERVICE
Full-time, 11:30 a.m. to 8 p.m.
shift. Extensive kitchen experi-
ence required. Good wages, fringe
benefits, excellent working con-
ditions.
Contact Mrs. Dettling
475-1311
Food Service Director
Chelsea
Community Hospital
An Equal Opportunity Employer
BAZAAR—United Methodist church
at Waterloo. Oct. 19 and 20, 10
a.m. to 5 p.m. Doll clothes, hand-
made items, bake sale. Many more
items, come and see them.
FOR SALE—Hand-made hairpin
lace afghan, 84"x44". Make good
Christmas gift. 498-2471.

Men's
JEANS & SLACKS
Famous Name
Brands
1/2 and more off
BARGAIN FLOOR
DANCER'S

Supervisor
FOOD SERVICE
Full-time, 11:30 a.m. to 8 p.m.
shift. Extensive kitchen experi-
ence required. Good wages, fringe
benefits, excellent working con-
ditions.
Contact Mrs. Dettling
475-1311
Food Service Director
Chelsea
Community Hospital
An Equal Opportunity Employer
BAZAAR—United Methodist church
at Waterloo. Oct. 19 and 20, 10
a.m. to 5 p.m. Doll clothes, hand-
made items, bake sale. Many more
items, come and see them.
FOR SALE—Hand-made hairpin
lace afghan, 84"x44". Make good
Christmas gift. 498-2471.

Men's
JEANS & SLACKS
Famous Name
Brands
1/2 and more off
BARGAIN FLOOR
DANCER'S

Supervisor
FOOD SERVICE
Full-time, 11:30 a.m. to 8 p.m.
shift. Extensive kitchen experi-
ence required. Good wages, fringe
benefits, excellent working con-
ditions.
Contact Mrs. Dettling
475-1311
Food Service Director
Chelsea
Community Hospital
An Equal Opportunity Employer
BAZAAR—United Methodist church
at Waterloo. Oct. 19 and 20, 10
a.m. to 5 p.m. Doll clothes, hand-
made items, bake sale. Many more
items, come and see them.
FOR SALE—Hand-made hairpin
lace afghan, 84"x44". Make good
Christmas gift. 498-2471.

Men's
JEANS & SLACKS
Famous Name
Brands
1/2 and more off
BARGAIN FLOOR
DANCER'S

Supervisor
FOOD SERVICE
Full-time, 11:30 a.m. to 8 p.m.
shift. Extensive kitchen experi-
ence required. Good wages, fringe
benefits, excellent working con-
ditions.
Contact Mrs. Dettling
475-1311
Food Service Director
Chelsea
Community Hospital
An Equal Opportunity Employer
BAZAAR—United Methodist church
at Waterloo. Oct. 19 and 20, 10
a.m. to 5 p.m. Doll clothes, hand-
made items, bake sale. Many more
items, come and see them.
FOR SALE—Hand-made hairpin
lace afghan, 84"x44". Make good
Christmas gift. 498-2471.

Men's
JEANS & SLACKS
Famous Name
Brands
1/2 and more off
BARGAIN FLOOR
DANCER'S

Supervisor
FOOD SERVICE
Full-time, 11:30 a.m. to 8 p.m.
shift. Extensive kitchen experi-
ence required. Good wages, fringe
benefits, excellent working con-
ditions.
Contact Mrs. Dettling
475-1311
Food Service Director
Chelsea
Community Hospital
An Equal Opportunity Employer
BAZAAR—United Methodist church
at Waterloo. Oct. 19 and 20, 10
a.m. to 5 p.m. Doll clothes, hand-
made items, bake sale. Many more
items, come and see them.
FOR SALE—Hand-made hairpin
lace afghan, 84"x44". Make good
Christmas gift. 498-2471.

Men's
JEANS & SLACKS
Famous Name
Brands
1/2 and more off
BARGAIN FLOOR
DANCER'S

WANT ADS

PATCHING and PLASTERING.
Call 475-7489. 88tf
G. G. HOPPER
Building Contractors
Gregory 498-2148 84tf

REAL ESTATE
40 ACRES, Lyndon township, high
and rolling with view of lake,
frontage on two roads, flowing
creek creates border old barn,
Chelsea schools, \$45,000, with land
contract terms possible.
WATERLOO AREA—An ideal
building site consisting of high
rolling land, a pond with trees,
all surveyed with 13 acres, con-
venient to Chelsea or I-94. Land
contract with \$5,000 down.
3-ACRE building site, includes
well, septic system and electric
to property. Full price \$5,000.
Stockbridge schools.
4. 5-BEDROOM HOME in nice

WANT ADS

Automotive Rust Proofing Cars and Trucks

Village Motor Sales, Inc.
1143 Manchester Rd., Chelsea
Phone 475-8661
Hours: 9 a.m. to 5 p.m.
Phone 475-8661
Hours: 9 a.m. to 5 p.m.

CUSTOM PAINTING

Painting - Candy Apple
Landing - Customizing
Air Brush Work
Planes - One Specialty
A.A.A. - MOTORCYCLES
AND BOATS
Complete Fiberglass Repair

Village Motor Sales, Inc.
1143 Manchester Rd., Chelsea
Phone 475-8661

Nobody's Perfect, Houses Aren't Either!

LARGE OLDER HOME on a quiet street in village of Manchester. Needs someone who cares to make it into a dream home.

VACANT LAND - 1 one-third 2, 4, 6, 11, 20, 21.5, 33, 38.5, 44, 91 acres of vacant land available in the Manchester Chelsea and Clinton area.

NOW IS THE TIME to look for a farm. We have farms, and more farms. Acres 131, 208, 154, 180, 270, 475 and 3 of 80 acres each, located in Washenaw, Jackson and Hillsdale counties. For further information, CALL

Spear & Associates Inc.
REALTORS
122 W. Main, Manchester
428-6388 or 428-8040
Evening: Maria Lehn, 428-8182 or Ellis Pratt, 428-8862

PONIES, one Welsh pinto and one Shetland. Must take both. Cheap. 475-2503.

Carhartt WORK JACKETS COVERALLS & OVERALLS
All new for winter.
BASEMENT
DANCER'S

FOR SALE—Chelsea power take off, Tulsa winch, capacity 8,000 lbs., with shaft and universal. Cap for pickup, door and screened windows. Used lumber, 2"x8"x10' and 2"x4', and aluminum sheets. 10865 Dexter-Chelsea Rd.

WANT ADS

LEHMAN WAHL
Land Appraisal
Residential and Farm
1707 West Austin Rd.
Manchester, Mich.
Area Code 313
425-8886

Chelsea Associated Builders
Custom Building and Remodeling.
Over 20 years experience.
Call 475-8182.

CALL FRANK for all your carpet cleaning jobs, morning or week-end. Needs only 3 hours to dry. Only 10¢ per square foot. Phone now for free estimate, 781-4328. All work guaranteed.

Cactus Plants
20 VARIETIES
LABELED.
Also PLANTERS
and HOUSE PLANTS

Sylvan Flower Shop
716 W. Middle
Chelsea, Mich.
Phone 475-1561
Open 9 a.m. to 6 p.m.

Maintenance Helper
Full time, day shift. Some maintenance ability or experience preferred. Good working conditions, fringe benefits.

Chelsea Community Hospital
475-1311
An equal opportunity employer.

Howell Town & Country, Inc.

3-BEDROOM RANCH with fireplace, beamed ceiling, 2-car garage, family room, on 3 lots. Privileges to Portage Lake, \$36,900. LHD 1045.

SMALL HORSE FARM—5 acres, new 3-bedroom brick home, 1 1/2 baths, near Pinckney. SF 1428.

25 ACRES—new house and barn, near Williamston. Near I-96 expressway. Priced to sell. SF 1427.

3 VACANT ACRES near Stockbridge, \$7,500. A 1931 land contract available.

SEVERAL 10-acre parcels near Chelsea with land contracts. Very wooded.

Howell Town & Country, Inc.
Phone 878-3177
CARLIE WIEDMAN
Local Representative
426-3758 evenings

Male Help Wanted
Must be out of school. Apply
Stuckey's
Pecan Shoppe
50 South Fletcher Road
Chelsea, Mich.

NOTICE—From this date forward (Oct. 11, 1973) I will not be responsible for any debts contracted by anyone other than myself. Gary N. Miles.

WANT ADS

NOW Full Time Complete Body Shop Service
Stop In For An Estimate

PALMER FORD
222 S. Main St.
475-1301

CUSTOM BUILDING
LICENSED & INSURED
FREE ESTIMATES

TOTAL CONSTRUCTION SERVICES
—Residential, commercial and industrial
—Garages
—Remodeling - Additions
—Aluminum Siding
—Roofing
—Trenching

SLOCUM CONTRACTORS & BUILDERS
Serving Washtenaw County
For Over 20 years
20700 OLD US-12
CHELSEA
Phone 475-8821 or 475-7611

Pine Haven Saddlery
4534 Dexter Township Rd.
Phone Dexter 426-4288

Complete line of English and Western equipment. 10% discount to all 4-H Club members.
Store Hours: Mon.-Sat., 9-9
Sunday, 10-9

NEW and REMODELING Residential Carpenter Contractor
M. A. LAWRENCE
1-517-522-4864

Siding, Roofing and Gutters
Reasonably priced and licensed.

Mills Construction Co.
Call 861-8657
for free estimates.

THE LITTLE FLOWER SHOP
3451 Waltrous Rd., Chelsea
Phone GR 5-8508

We Deliver and Wire
Flowers, Corsages, Arrangements and Plants.
Weddings and Funerals.

HOUSE FOR SALE in Stockbridge area. 6-room house, on 2 1/2 acres. Full basement, gas heat in Stockbridge area. Call 784-4067 after 3:30 except on week-ends.

CALL NOW SAVE \$\$\$ Greenwood
for
Siding - Remodeling
FREE ESTIMATES
Call
Chelsea 475-2400

WANTED TO RENT—House to rent in Chelsea School District. References. Husband is cabinet maker; specialty remodeling. Will repair or remodel as part payment if owner desires. Negotiable. Phone 475-1845.

FANTASTIC
Just what you've been looking for! In the midst of Pinckney Recreation and near Inverness Country Club. Beautiful, slightly rolling 1.18 acre, \$7,500 — 1.91 acres, \$9,000 — 10.02 acres, \$18,500. 30% down, 8 1/2% interest on land contract. Chelsea schools, too.
Call: Carol Mayra

Edwards Real Estate
1-227-6865 or 482-8570

NOTICE—To whom it may concern: From this date on, Oct. 5, 1973, I will not be responsible for anyone's debts but my own. Mrs. Hallie P. LaFontaine.

WANT ADS

Gem Travel Trailers and Campers

PICK UP COVERS
4" ————— \$100.00
20" ————— \$179.00 and up

Triangle Sales
Chelsea 475-4800

VACUUM CLEANERS — Electro-lux, authorized sales and service. James Cox, Manchester. Ph. 428-2081 or 428-8221.

CAR RENTAL by the day, week, or month. Full insurance coverage, low rates. Call Lyle Christwell at Palmer Motor Sales, 475-1801.

Complete Body Repair Service
Bumping - Painting
Windshield and Side Glass Replacement
Free Pick-up & Delivery
Open Monday Until 9
CONTACT DON KNOLL FOR FREE ESTIMATE

Village Motor Sales, Inc.
IMPERIAL - CHRYSLER
DODGE - PLYMOUTH
Phone 475-8861
1183 Manchester Rd., Chelsea
Hours: 8 a.m. to 6 p.m.
Tues. thru Fri. Until 9 Monday.
9 a.m. to 2 p.m. Saturday

MINI-BIKES — Special, \$99.95, \$119.95, \$129.95 and up. Full line of Ruppes including the 80 cc's and 100 cc's. Also, 3-wheel ATVs from \$189.95 up. Go-Carts, \$189.95 up. Gemini 50 cc, 80 cc, 125 cc. Over 100 bikes in stock, parts and service on all makes. Open 9-9, Sunday, 12-6. Coffman Sports Center, 1011 Lansing Ave., Jackson, Mich.

REPAIR SERVICE for household refrigerators, freezers and garbage disposers. Call Bill, 426-8314.

Headquarters for RED WING WORK SHOES

Foster's Men's Wear

FREE CATALOG
Save on hundreds of low-priced items. Send name and address to Catalog, Dept. C, Box 187, Grass Lake, Mich. 49240.

POTATOES—Bring containers. No Sunday sales. 8 miles north of Chelsea on M-52 to right on Boyce and left on 15557 Farnsworth Rd.

FOR REAL DOLLAR SAVINGS be sure and see us before you buy any new or used car. Palmer Motor Sales, Inc. Your Ford Dealer for over 50 years.

HELP Wanted
To reduce my stock of 1974 Admiral color television. 5-year warranty on picture tube. 100% solid state. One year free service, parts and labor.

Service on all makes TV, radio, stereo.
Sales and installation of antenna systems.

PORTER'S TV
212 Buchanan St.
Chelsea, Mich.
Phone 475-8880

PERSONALIZED Christmas cards by Hallmark. Chelsea Card & Gift Shop, 116 S. Main.

PERSONALIZED Christmas cards by Hallmark. Chelsea Card & Gift Shop, 116 S. Main.

LADY WANTED to stay with an elderly lady. Room and board and pay. Call Mrs. Alvin Wahr, RR2, Chelsea, phone Grass Lake (517) 522-8551.

Apple Butter Festival
Saturday, Oct. 13
All Day at
Unadilla Campground

Watch for the signs. See apple butter made pioneer style.
Apple butter, home-made donuts and bazaar items for sale.
Sponsored by
Unadilla Presbyterian Church

SEWS STRETCH MATERIAL — 1973 Dial and Stitch, \$47.75. Left in layaway. Sew's stretch material. Comes with a walnut sew table, beautiful pastel color. Full size head. All built-in to zig-zag, buttonholes, overcast makes fancy stitches. Only \$47.75 cash or terms arranged. Trades accepted. Call Ypsilanti collect, 482-8597, 9 a.m. to 9 p.m. Electro Grand.

WANT ADS

ELECTRICAL WIRING of all types New and rewiring. Ph. 428-4553.

EVINGER REAL ESTATE, Alpine St., Dexter. Phone 424-8518.

SEE US for transit mixed concrete. Klump Bros. Gravel Co. Phone Chelsea 475-2530, 4920 Loveland Rd., Grass Lake, Mich. 49042

TRAVEL TRAILERS — 18-ft. and up. 10x55 ft. trailers. John R. Jones Trailer Sales, Gregory, Mich. Phone 498-2855.

WANTED — Carpentry work, any type. (Charles, Romina, Ph. 475-7474.

FOR SALE — 1 acre building sites, Chelsea area. Phone 475-2828.

PIANO TUNING, Chelsea and area. Facilities for reconditioning and rebuilding. Used piano sales; reconditioned grands and verticals. E. Ecklund. 426-4429.

ASPHALT PAVING
Driveways - Parking Areas
Landscaping - Site Work
PREVO EXCAVATING CO.
(517) 851-8603 or (813) 453-1027

ALLSTATE INSURANCE
AUTO - BOAT - COMMERCIAL
LIFE - HEALTH - HOME
Phone Even. or Week-ends for
N. H. MILES, Agent
GR 5-8334

FOR SALE — Indian cents, postcards, books, foreign coins, Australian opals, and other articles. Lawrence E. Guinan, 1571 Sugar Loaf Lake. Call 475-2317.

USED CARS and TRUCKS
BOUGHT and SOLD

KETO, INC.
8080 Grand
DEXTER
Phone 466-4535

CAR & TRUCK LEASING. For details see Lyle Christwell at Palmer Motor Sales, 475-1801.

SCHNELL'S REFUSE SERVICE
Still \$3.50 a month.
Once a week in the winter.
Twice a week in the summer.
Call Jackson, Mich.
(517) 787-0343

PICK-UP CAMPER TOPS \$89.95, \$149.95, \$169.95. Slant-side, cab, high, all colors. Also, 30-in. and 36-in. tops. Also, insulated paneled with screens. Save \$50. Coffman's Sports Center, 1011 Lansing Ave., Jackson, Mich. Open 9-9, Sundays 12-6.

SEAMLESS ALUMINUM Eaves-troughs installed and guaranteed. White and color available. For free estimates call Rick Kleinschmidt, R. D. Kleinschmidt Co., 428-8836.

Sand Gravel

KLINK EXCAVATING
Bulldozer - Backhoe
Road Work - Basements
Trucking - Crane Work
Top Soil - Demolition
Drainfield - Septic Tank
Trenching, 6" up
Industrial, Residential, Commercial
CALL 475-7631

NORTH LAKE United Methodist church, Rummage Sale, Bake Sale, Flea Market, Friday, Oct. 12 and Saturday, Oct. 13, from 10 a.m. to 4 p.m.

FOOTWEAR
1/3 - 1/2 and more off
BARGAIN FLOOR
DANCER'S

HELP WANTED
Driver for delivering petroleum products.
Call for interview.
Geo. A. Knickerbocker
Standard Oil Agent
Ph. Chelsea 475-2446

REDUCE excess fluids with Fluidex. Lose weight with Dex-A-Diet capsules. Chelsea Drug.

28,000 UNITS of Vitamin E in Toco-Derm skin oil. Skin discolors? Try Toco-Derm cream at Chelsea Drug.

FOR SALE — 1961 cherry Chevrolet. Call Ken, 428-8589.

WANT ADS

SECURITY GUARDS
Chelsea, Manchester
Whitmore Lake area.
Phone 781-5815
for appointment,
or apply at
290 S. Wagner Rd.
Ann Arbor
SANFORD SECURITY SERVICE, INC.

MODERNIZE YOUR HOME
Remodeling inside and out.
AWNINGS - PATIOS
Basements, under existing homes or new.
Porches, insulation, room additions, siding, bathrooms, and kitchens, cement work, roofing.
Complete line.
Licensed contractor.
FREE ESTIMATES
BANK TERMS

No money down, bank financing. (517) 785-6800 Jackson or (313) 263-2738, Adrian Seven days a week, 24 hours a day.

Ken McDonough
770 Oak Hill Dr.
Brooklyn, Mich. 49230

Custom Built Homes
O-h! We Remodel too.
U-can count on us
N-o Job Too Small
T-rim Inside & Out
R-ough-in Only If
Y-u Want to Finish
S-iding Aluminum, 5" Gutters
I-mmediate Attention
D-ALE COOK & CO.
E-stimates, Free

BUILDERS
Please Call
475-8863
DALE COOK

Personalized Christmas Cards
Select Now and SAVE!
15% Discount
on all orders placed before Oct. 31

The Chelsea Standard

ATTENTION, DEER HUNTERS — The W. W. Weaver Co. Tannery of Reading, Mich. is out of business. We are assuming their clientele. Bring your deer skins to us for tanning. Fast service, reasonable prices. Hides must be in by Dec. 15th. We also buy deer hides. See us at the Cheyenne Bonnet Leather Shop, 137 N. Jackson St., Jackson, Mich. 49201.

WANTED — Press operators for second and third shifts. Experience not necessary. Apply in person at Manchester Plastics, Inc., 500 W. Madison St., Manchester, between 8:00 a.m. and 4:30 p.m.

FOR SALE — Stove, refrigerator, dining room table and chairs, other odd pieces of furniture. 800 N. Main, 3:30-5:30, Monday-Friday.

FOR SALE — 19" portable TV, \$30. Also, 30" drop-in type electric range and oven, \$25. Ph. 475-2831.

FOR SALE — Exhibition waterfowl, pairs only, \$5 each. Call 475-2879 after 5 p.m.

FOR SALE — Sofa, lawn mower, wool rags for rug hooking. See any time Fri., Sat., Sun., 335 Wilkinson, Chelsea.

HOUSECLEANER wanted 1 or 2 days a week. References. In Chelsea-Dexter area. Write Box OC-11, care of The Chelsea Standard, Chelsea.

GARAGE & ANTIQUE Sale, Oct. 12 and 13, 1275 S. Fletcher Rd.

FOR SALE — Suffolk ram lamb. Ph. 475-7628.

CONVALESCENT HOME vacancy for ladies or men. Special diet if necessary. Reasonable rates. 475-1503.

GARAGE SALE — 10 a.m. to 8 p.m., Oct. 11 and 12. Gas heater, new punch bowl set, lots of dishes, some Tupperware, electric fryer, linens, child's wagon, lots more. 142 South St. Chelsea. Ph. 475-1503.

LARGE GARAGE SALE — Antique furniture of all kinds. Curved glass, china cabinet, dressers, chests, cane bottom chairs, rocking chairs, some antique dishes, some tools. 13759 Old US-12 East Chelsea, Mich. Phone 475-7594. Wed. through Sunday, 9 a.m. to 5 p.m.

FORD 1967 half-ton F-100 pickup. Automatic transmission, V-8, post-traction, 90-hp. rear air shocks, plywood carpenter boxes built on both sides. 475-1939, x17

WANT ADS

FOR RENT — Fair Service Center for meetings, parties, wedding receptions, etc. Weekdays or week-end. Contact John Walz, phone 475-1516.

HAMMOND ORGAN teachers wanted to teach in their own homes. Call Grinnell Brothers, Ann Arbor, 967-5667.

Fireplace Builder
Field stone mason, block and brick mason, tuck pointing.
FREE ESTIMATES
Call 475-8025 after 8 p.m.

Patrick Grammatico

HELP WANTED — Young man to do light construction work. No experience necessary. This is a temporary full-time job. Qualifications: 426-8274.

PERSONALIZED Christmas cards by Hallmark. Chelsea Card & Gift Shop, 116 S. Main. 475-7501.


WANT ADS

D&G Allen Excavating
Septic Tanks and Drainfields
Back Hoe and Dzing
Sand, Gravel and Topsoil Hauled
Phone (517) 851-8386
or (517) 851-8278

BUILDERS — House and barn roofing, all types of roof repairs, aluminum storm windows and doors, aluminum siding and gutters, awnings, porch enclosures, garage and room additions, cement work. Call Joe Hayes for free estimates, Manchester 428-8520.

SHOES FOR REPAIR picked up and delivered every Monday at Parish's Cleaners, 113 Park St., Chelsea, Mich.

ALCOA ALUMINUM SIDING specialist. Michigan since 1938. All exterior wood covered. Beautiful look. Insulation. Maintenance free. William Davis, 663-6635.



TODAY'S THOUGHT

By LOUIS BURGHARDT

A huge sum of money is spent for disposal of garbage. But we spend more to buy garbage than we spend to get rid of it. It is a national disgrace that more is paid to swinish peddlers of odorless garbage than is paid for disposal of that which has odor.

Public permissiveness along with weird legal decisions have made it possible for revolting and insulting salesmen to swamp everyone with their sickening smut. Most movies and many TV shows shock the sensitivities of clean minded people. Authors and publishers seem determined to popularize previously un-permissible language. Anything goes.

Legions of and for decency are seen here and there but added effort must be made to stop this onslaught of smut and filth. Fraternal, civic, church organizations and the like might start a concentrated effort as a project that should find size-able support . . . BURGHARDT FUNERAL HOME, 214 East Middle St., Chelsea, Mich. Phone 475-1551.

SPECIALS

U. S. NO. 1 MICHIGAN

Potatoes . . 10-lb. bag 79c

SWIFT'S PREMIUM

Round Steak . . lb. \$1.33

12-OZ. CAN MINUTE MAID FROZEN

Orange Juice 44c

FARMER PEET'S


Ring Bologna . . . lb. 93c

BETTY CROCKER CHOCOLATE, LEMON, WHITE

Frosting Mix . . . box 36c

KUSTERER'S FOOD MARKET

DIAL 475-2721 WE DELIVER



ways to benefit

WITH A CHECKING ACCOUNT

1. Good records
2. Safeguard cash
3. Pay by mail
4. Deposit by mail
5. Automatic receipts
6. Save time
7. Business-like money management

Open your Checking Account here!

CHELSEA STATE BANK

Member Federal Reserve System

Member FDIC

Member Federal Deposit Insurance Corp.

A1 USED CARS

AT OUR TRIANGLE LOT
M-52 and Old Manchester Road

1972 PINTO Runabout, automatic.	\$2195	'68 PLYMOUTH Wagon V-8, auto., power	\$ 895
1971 FORD WAGON LTD, with air	\$2595	'68 LTD 4-DR. Real Clean	\$1095
1971 LTD CONVY. Loaded with extras	\$1995	DEMOS	
1971 FORD WAGON A Real Buy	\$1695	'73 GRAN TORINO 2-DR. . .SAVE	
1970 CHEV 4-DR. V-8, automatic	\$1295	'73 LTD 4-DR. . .SAVE	
1969 MONTEGO Conv. V-8, Automatic	\$ 995	'73 LTD Squire Wagon . .SAVE	
1969 FORD WAGON V-8, Automatic	\$1195	'71 FORD 3/4 TON V-8, one owner	\$1995
1968 CHEV. IMPALA 2-DR.	\$1095	'71 FORD BRONCO 4-Wheel Drive	\$2695
		'69 JEEP Station Wagon 4-wheel drive	\$1695

SEE John Popovich
Don Moore
Geo. Palmer

SEE Lyle Christwell
Don Lawhorn
Bennie Hayes

The Little Profit saves you more than anything you ever bargained for

PALMER FORD

Since April 1912

Open Monday Thru Friday Till 9:00 p.m. Sat. Till 5:30

475-1301

WANT ADS

WANT AD
 I am looking for a person who is interested in a job in the field of sales and marketing. The person should have a minimum of two years experience in a similar position. If interested, please send your resume to: **WANT AD**, c/o The Chelsea Standard, P.O. Box 100, Chelsea, Mich. 48118.

WANT ADS

WANT AD
 I am looking for a person who is interested in a job in the field of sales and marketing. The person should have a minimum of two years experience in a similar position. If interested, please send your resume to: **WANT AD**, c/o The Chelsea Standard, P.O. Box 100, Chelsea, Mich. 48118.

WANT ADS

WANT AD
 I am looking for a person who is interested in a job in the field of sales and marketing. The person should have a minimum of two years experience in a similar position. If interested, please send your resume to: **WANT AD**, c/o The Chelsea Standard, P.O. Box 100, Chelsea, Mich. 48118.

WANT ADS

WANT AD
 I am looking for a person who is interested in a job in the field of sales and marketing. The person should have a minimum of two years experience in a similar position. If interested, please send your resume to: **WANT AD**, c/o The Chelsea Standard, P.O. Box 100, Chelsea, Mich. 48118.

WANT ADS

WANT AD
 I am looking for a person who is interested in a job in the field of sales and marketing. The person should have a minimum of two years experience in a similar position. If interested, please send your resume to: **WANT AD**, c/o The Chelsea Standard, P.O. Box 100, Chelsea, Mich. 48118.

WANT ADS

WANT AD
 I am looking for a person who is interested in a job in the field of sales and marketing. The person should have a minimum of two years experience in a similar position. If interested, please send your resume to: **WANT AD**, c/o The Chelsea Standard, P.O. Box 100, Chelsea, Mich. 48118.

WANT ADS

WANT AD
 I am looking for a person who is interested in a job in the field of sales and marketing. The person should have a minimum of two years experience in a similar position. If interested, please send your resume to: **WANT AD**, c/o The Chelsea Standard, P.O. Box 100, Chelsea, Mich. 48118.

WANT ADS

WANT AD
 I am looking for a person who is interested in a job in the field of sales and marketing. The person should have a minimum of two years experience in a similar position. If interested, please send your resume to: **WANT AD**, c/o The Chelsea Standard, P.O. Box 100, Chelsea, Mich. 48118.

WANT ADS

WANT AD
 I am looking for a person who is interested in a job in the field of sales and marketing. The person should have a minimum of two years experience in a similar position. If interested, please send your resume to: **WANT AD**, c/o The Chelsea Standard, P.O. Box 100, Chelsea, Mich. 48118.

WANT ADS

WANT AD
 I am looking for a person who is interested in a job in the field of sales and marketing. The person should have a minimum of two years experience in a similar position. If interested, please send your resume to: **WANT AD**, c/o The Chelsea Standard, P.O. Box 100, Chelsea, Mich. 48118.

WANT ADS

WANT AD
 I am looking for a person who is interested in a job in the field of sales and marketing. The person should have a minimum of two years experience in a similar position. If interested, please send your resume to: **WANT AD**, c/o The Chelsea Standard, P.O. Box 100, Chelsea, Mich. 48118.

WANT ADS

WANT AD
 I am looking for a person who is interested in a job in the field of sales and marketing. The person should have a minimum of two years experience in a similar position. If interested, please send your resume to: **WANT AD**, c/o The Chelsea Standard, P.O. Box 100, Chelsea, Mich. 48118.

WANT ADS

WANT AD
 I am looking for a person who is interested in a job in the field of sales and marketing. The person should have a minimum of two years experience in a similar position. If interested, please send your resume to: **WANT AD**, c/o The Chelsea Standard, P.O. Box 100, Chelsea, Mich. 48118.

WANT ADS

WANT AD
 I am looking for a person who is interested in a job in the field of sales and marketing. The person should have a minimum of two years experience in a similar position. If interested, please send your resume to: **WANT AD**, c/o The Chelsea Standard, P.O. Box 100, Chelsea, Mich. 48118.

WANT ADS

WANT AD
 I am looking for a person who is interested in a job in the field of sales and marketing. The person should have a minimum of two years experience in a similar position. If interested, please send your resume to: **WANT AD**, c/o The Chelsea Standard, P.O. Box 100, Chelsea, Mich. 48118.

WANT ADS

WANT AD
 I am looking for a person who is interested in a job in the field of sales and marketing. The person should have a minimum of two years experience in a similar position. If interested, please send your resume to: **WANT AD**, c/o The Chelsea Standard, P.O. Box 100, Chelsea, Mich. 48118.

WANT ADS

WANT AD
 I am looking for a person who is interested in a job in the field of sales and marketing. The person should have a minimum of two years experience in a similar position. If interested, please send your resume to: **WANT AD**, c/o The Chelsea Standard, P.O. Box 100, Chelsea, Mich. 48118.

WANT ADS

WANT AD
 I am looking for a person who is interested in a job in the field of sales and marketing. The person should have a minimum of two years experience in a similar position. If interested, please send your resume to: **WANT AD**, c/o The Chelsea Standard, P.O. Box 100, Chelsea, Mich. 48118.

WANT ADS

WANT AD
 I am looking for a person who is interested in a job in the field of sales and marketing. The person should have a minimum of two years experience in a similar position. If interested, please send your resume to: **WANT AD**, c/o The Chelsea Standard, P.O. Box 100, Chelsea, Mich. 48118.

WANT ADS

WANT AD
 I am looking for a person who is interested in a job in the field of sales and marketing. The person should have a minimum of two years experience in a similar position. If interested, please send your resume to: **WANT AD**, c/o The Chelsea Standard, P.O. Box 100, Chelsea, Mich. 48118.

WANT ADS

WANT AD
 I am looking for a person who is interested in a job in the field of sales and marketing. The person should have a minimum of two years experience in a similar position. If interested, please send your resume to: **WANT AD**, c/o The Chelsea Standard, P.O. Box 100, Chelsea, Mich. 48118.

WANT ADS

WANT AD
 I am looking for a person who is interested in a job in the field of sales and marketing. The person should have a minimum of two years experience in a similar position. If interested, please send your resume to: **WANT AD**, c/o The Chelsea Standard, P.O. Box 100, Chelsea, Mich. 48118.

WANT ADS

WANT AD
 I am looking for a person who is interested in a job in the field of sales and marketing. The person should have a minimum of two years experience in a similar position. If interested, please send your resume to: **WANT AD**, c/o The Chelsea Standard, P.O. Box 100, Chelsea, Mich. 48118.

WANT ADS

WANT AD
 I am looking for a person who is interested in a job in the field of sales and marketing. The person should have a minimum of two years experience in a similar position. If interested, please send your resume to: **WANT AD**, c/o The Chelsea Standard, P.O. Box 100, Chelsea, Mich. 48118.

WANT ADS

WANT AD
 I am looking for a person who is interested in a job in the field of sales and marketing. The person should have a minimum of two years experience in a similar position. If interested, please send your resume to: **WANT AD**, c/o The Chelsea Standard, P.O. Box 100, Chelsea, Mich. 48118.

WANT ADS

WANT AD
 I am looking for a person who is interested in a job in the field of sales and marketing. The person should have a minimum of two years experience in a similar position. If interested, please send your resume to: **WANT AD**, c/o The Chelsea Standard, P.O. Box 100, Chelsea, Mich. 48118.

WANT ADS

WANT AD
 I am looking for a person who is interested in a job in the field of sales and marketing. The person should have a minimum of two years experience in a similar position. If interested, please send your resume to: **WANT AD**, c/o The Chelsea Standard, P.O. Box 100, Chelsea, Mich. 48118.

WANT ADS

WANT AD
 I am looking for a person who is interested in a job in the field of sales and marketing. The person should have a minimum of two years experience in a similar position. If interested, please send your resume to: **WANT AD**, c/o The Chelsea Standard, P.O. Box 100, Chelsea, Mich. 48118.

WANT ADS

WANT AD
 I am looking for a person who is interested in a job in the field of sales and marketing. The person should have a minimum of two years experience in a similar position. If interested, please send your resume to: **WANT AD**, c/o The Chelsea Standard, P.O. Box 100, Chelsea, Mich. 48118.

WANT ADS

WANT AD
 I am looking for a person who is interested in a job in the field of sales and marketing. The person should have a minimum of two years experience in a similar position. If interested, please send your resume to: **WANT AD**, c/o The Chelsea Standard, P.O. Box 100, Chelsea, Mich. 48118.

WANT ADS

WANT AD
 I am looking for a person who is interested in a job in the field of sales and marketing. The person should have a minimum of two years experience in a similar position. If interested, please send your resume to: **WANT AD**, c/o The Chelsea Standard, P.O. Box 100, Chelsea, Mich. 48118.

WANT ADS

WANT AD
 I am looking for a person who is interested in a job in the field of sales and marketing. The person should have a minimum of two years experience in a similar position. If interested, please send your resume to: **WANT AD**, c/o The Chelsea Standard, P.O. Box 100, Chelsea, Mich. 48118.

HUNTER'S CALENDAR FOR '73-'74

SEPT. 10
 Deer season (Zone 1) for deer hunters and archers. Use of dogs permitted.

SEPT. 15
 Ruffed grouse and woodcock season (Zones 1 and 2). *Squirrels come under gun status which are off limits in Zone 1 except for squirrel hunting on jackpine and aspen.

SEPT. 21
 Start of permit-controlled deer hunt in parts of Gaylord and Mio districts.

SEPT. 22
 National Hunting and Fishing Day.

SEPT. 27
 Close of deer hunt in Gaylord and Mio areas.

SEPT. 29
 Open of permit pheasant season for permit holders in parts of 15 state game and recreation areas in Zone 3.

OCT. 1
 Goose season opens in Zones 1 and 2, including Seney Goose Management Area, and Saginaw County Goose Management Area of southern Lower Peninsula. *Statewide start of archery deer season with bears also fair game for hunters in Zone 1 only. *Ruffed grouse and woodcock season in Zone 1 only, with cubs protected. *Bow hunting ends statewide.

OCT. 21
 Goose hunting begins in Seney Goose Management Area.

OCT. 30
 End of goose hunting in Seney Goose Management Area.

NOV. 1
 Limited quail season comes to Zone 3.

NOV. 23
 Season closes on ducks, coots, and gallinules statewide.

NOV. 24
 Start of special season-only hunt in certain designated waters of Zone 2 and 3.

NOV. 30
 Close of firearm deer season and wrap-up of action on game statewide, including in Saginaw County Goose Management Area. *Also final day for bear hunting with guns in Zone 1.

DEC. 1
 Archery deer season resumes statewide. *Ruffed grouse hunting picks up again in Zones 2 and 3.

DEC. 9
 End of special season in Zones 2 and 3.

DEC. 31
 Final day of archery deer hunting statewide and ruffed grouse season in Zones 2 and 3.

JAN. 1
 Bobcat hunting starts for permit holders in several counties of Gaylord District of Zone 2.

JAN. 3
 Raccoon hunting closes statewide.

FEB. 28
 End of limited season in Gaylord District.

MARCH 1
 Final day of season in Zones 2 and 3. *End of permit pheasant season in state-licensed areas of Zone 3.

NOV. 15
 Firearm deer season opens statewide. *Hearns fair game during that season in Zone 1 only, with cubs protected. *Bow hunting ends statewide.

New Members Appointed to Regional Planning Committee

Chelsea Area Regional Planning Committee met last Thursday for what was primarily an organizational meeting, and appointed two representatives to fill vacancies in its membership.

Treasurer James Lieback, temporarily filling the role of secretary due to the resignation of secretary Bob Ward, said that committees concerning legislation, agriculture, land uses, community schools and relationships, industrial and commercial development, state ownership of land, were reorganized for the coming year.

Various committees and their functions were reviewed and the Planning Committee discussed ways of making each individual group, working from its separate bases, more active.

Two new appointees to the committee are Wally Fusilier, who fills a vacancy from Lima township, and Gerald Ringe, filling a vacancy from the Village of Chelsea.

The concept of a regional planning committee had its origin during the summer of 1971, when several civic leaders in northwest Washtenaw county discussed the need to provide guidelines for orderly regional growth. Included in the committee are three representatives from each of the five townships (Lima, Sylvan, Lyndon, Waterloo, and Dexter) and from the Village of Chelsea, to total 18 members.

Next monthly meeting of the committee is scheduled for Thursday, Nov. 1, at 7:30 p.m. at Sylvan Township Hall. Discussion is expected to concern further organization and processes of study by the committees. A new secretary may also be appointed at this meeting.

Saline Area Players Stage 'Blithe Spirit'

A Noel Coward comedy, "Blithe Spirit," will open the second full performing season of the Saline Area Players tonight at 8 p.m. at the Saline Middle School Little Theater. The play will continue through Saturday night.

The 75-member group has performed three other plays since its inception, "Barefoot in the Park," "Oklahoma!" "Love is Contagious," and "Was This Murder?"

Cast for "Blithe Spirit" includes Frances M. Westra as Edith; Susan Keizer as Ruth; Charles Stallman as Charles; Norma Jean Keller as Elvira; Aileen Byfield as Madam Arcat; J. Dilar Murrell as Dr. Bradman; and Rose Carol Toth as Mrs. Bradman. Tickets are available at the Citizens Bank in Saline, and from cast members, and may also be purchased at the door.

Gary Klinsky will direct the performance, which is co-produced by Dorothy Barnes and Liza Lee Collins. Theodore Toth is set designer. Chuck McGill, president of the group, says that performance "Brigadoon" next Jan. 31 - Feb. 2, and "Spoon River Anthology," March 22-23, are presently scheduled.

McGill says that new members are welcome to join the group as either cast or crew members, and may obtain further information by calling him at 429-5241.

BROAD CONTINENT!
 The continent of Asia is so broad that the sun "spends" 11 hours—nearly half its daily journey—moving from Siberia's tip to Turkey's Aegean shore.

Senator Bursley Cited By School Board Association

Senator Gilbert E. Bursley (R-Ann Arbor) was today awarded the Michigan Superior Service Award by the Michigan Association of School Boards.

The award, which will be an annual future presentation by the school boards association, was for Senator Bursley's "outstanding contribution to public service as a state legislator, and as a leader in promoting innovative education legislation."

The presentation was made at a special luncheon held at the current joint convention of the Michigan Association of School Boards and Michigan Association of School Administrators at Cobo Hall in Detroit.

Addressing the assembly on "Future Needs and Directions in School Financing Reform" Senator Bursley, chairman of the Senate Education Committee and Assistant Majority Leader of the Senate, pointed to "striking gains" that have already been made in the field of finance reform.

"In 1972-73 there were 519,349 state-aid dependent children receiving less than 20 operating mills of tax support in their districts," Bursley said.

"On the basis of our latest July reports, this number has already been cut to 198,750."

"Our confident expectation is that it will be reduced to less than 50,000 by 1975-76 and that we will have reductions almost as dramatic in the number of children whose parents and neighbors pay more than 30 operating mills in support of their schools."

Bursley emphasized that the prime goal of the new law is to narrow the wide gap that presently exists in both school spending and school tax levels.

Describing school finance reform as a "continuing process" Senator Bursley revealed that he will soon be introducing a \$15 million program designed to relieve the property tax burden in areas where voters have approved special levies for vocational and special education.

In addition, he is readying legislation to expand the provisions of the Bursley Act that will bring some \$13 million in property tax relief to districts in the form of bonding-millage assistance.

"In all of these provisions" Senator Bursley said, "our plan is to require property tax reduction as a condition of receiving state reimbursement."

Growth in the nation's veteran population, from 24 million to over 29 million since 1965, will continue until 1975, then begin a steady decline to the 1965 level by the year 2000, according to a Veterans Administration projection.

Poor work, completed, is usually better than a brilliant performance postponed.

Frosh Grid Team Dumped By Brighton

Chelsea freshmen played at Brighton Tuesday and came limping home, beaten 40-8.

Once again it was that old enemy, the forward pass, doing most of the damage, and again, it came in the first half. On four touchdown passes, Brighton jumped to a 34-0 half-time lead. When they weren't throwing, Brighton attacked the ends with sweeps and options for several good gains and a touchdown.

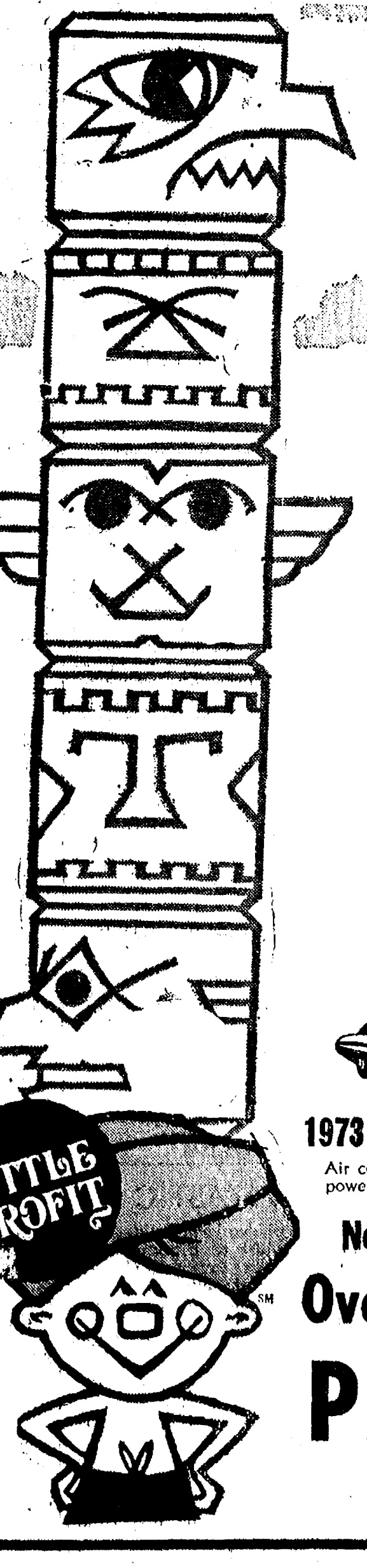
The tempo changed somewhat in the second half. A stronger pass rush from George Menge and Don Nadeau, and good play from Rick Davis and Scott Owings slowed Brighton's offense.

However, the Little Bulldogs couldn't do much with the ball, either. They finally got some points in the last minute with a pass from reserve quarterback John Toon to Pete Feeney for a 32-yard TD. Toon passed to John Rutherford for the extra points. Chelsea recovered an on-side kick on the kickoff, but the clock ran out before they could put together another drive.

The second half displayed some fierce hitting by both teams, reflected by the number of players who limped to the sidelines. The only injury of consequence to Chelsea was to Don Morrison, whose broken ankle will prevent him from seeing action for the rest of the season.

Cocach Balinton felt the team showed some good individual defensive play, in spite of the score. He says, "We just can't get down because we have a chance to win our remaining games."

Brighton is still undefeated while Chelsea slipped to 1-3. Next Tuesday the freshmen host South Lyon, another passing team, at 7 p.m.



LOW MAIN

No one undersells the Little Profit!

The Little Profit saves you more than anything you ever bargained for. Our fantastic volume business makes it possible—just see if we don't give you the rock-bottom price on the car, used car, truck or leased car of your choice, and service too. As the Little Profit says, "He who is tops in sales is the low man!"

SAVE \$ \$ \$ ON 1973 LEFTOVERS

1973 LTD 2-Dr. Hardtop
 Air conditioning, power steering, power brakes and all the extras.
 SAVE OVER \$1,000.
 Now Only \$3795

1973 Torino 2-Dr.
 V-8, automatic transmission, power steering and many other extras.
 SAVE OVER \$600.
 Now Only \$2925

Over 25 in Stock To Choose From

PALMER FORD

In Chelsea Since April 1912

475-1301

FEED MILL OPERATORS GRAIN HANDLERS

Good wages and benefits. Medical, Hospitalization, Life Insurance, Profit Sharing Plan. Eight Paid Holidays, Liberal Vacation Plan.

Apply in person at Plant Office or call (313) 475-1388.

Honeggers' & Co., Inc.

11800 Dexter-Chelsea Rd., Chelsea, Mich.

Cards of Thanks

CARD OF THANKS
 The family of Raymond C. Welshans, Sr., wishes to express their thanks and appreciation for the many acts of kindness, messages of sympathy, the beautiful floral arrangements and the food brought into our home during our bereavement. We especially thank Val Crow for his comforting message, Don Pierson, Bishop Charles McQuinn, and all who participated in the service. A special thanks to the ladies of the Church of Jesus Christ of Latter Day Saints, who came into our home and served the dinner.

Mrs. Viola Welshans
 Mr. and Mrs. Raymond C. Welshans, Jr., and family.
 Mr. and Mrs. Don Welshans and family.
 Mr. and Mrs. William Welshans and family.
 Mr. and Mrs. Terry Bailey and family.

Telephone Your Club News To 475-1371

BOWLING NEWS

Track Mixed League

Standings as of Oct. 5

1	Alley Runners	130
2	Leuthener's	128
3	Rowe Plumbing	122
4	River Rats	121
5	Faber Fabrics	119
6	Heavy Traffic	114
7	Dexter Gear & Spline	105
8	Hill & Missers	104
9	Flat Tires	89
10	Zap	85
11	Ding-A-Lings	81
12	4 D's	78

Rolling Pin League

Standings as of Oct. 5

1	Ed's	130
2	Ed's	128
3	Ed's	122
4	Ed's	121
5	Ed's	119
6	Ed's	114
7	Ed's	105
8	Ed's	104
9	Ed's	89
10	Ed's	85
11	Ed's	81
12	Ed's	78

Leisure Time League

Standings as of Oct. 5

1	Four Seasons	130
2	Shoppers	128
3	Super Laundry	122
4	Super Laundry	121
5	Super Laundry	119
6	Super Laundry	114
7	Super Laundry	105
8	Super Laundry	104
9	Super Laundry	89
10	Super Laundry	85
11	Super Laundry	81
12	Super Laundry	78

Chelton Lane Mixed

Standings as of Oct. 5

1	Marsh & Verwey	130
2	Marsh & Verwey	128
3	Marsh & Verwey	122
4	Marsh & Verwey	121
5	Marsh & Verwey	119
6	Marsh & Verwey	114
7	Marsh & Verwey	105
8	Marsh & Verwey	104
9	Marsh & Verwey	89
10	Marsh & Verwey	85
11	Marsh & Verwey	81
12	Marsh & Verwey	78

Sunday Swingers

Standings as of Oct. 7

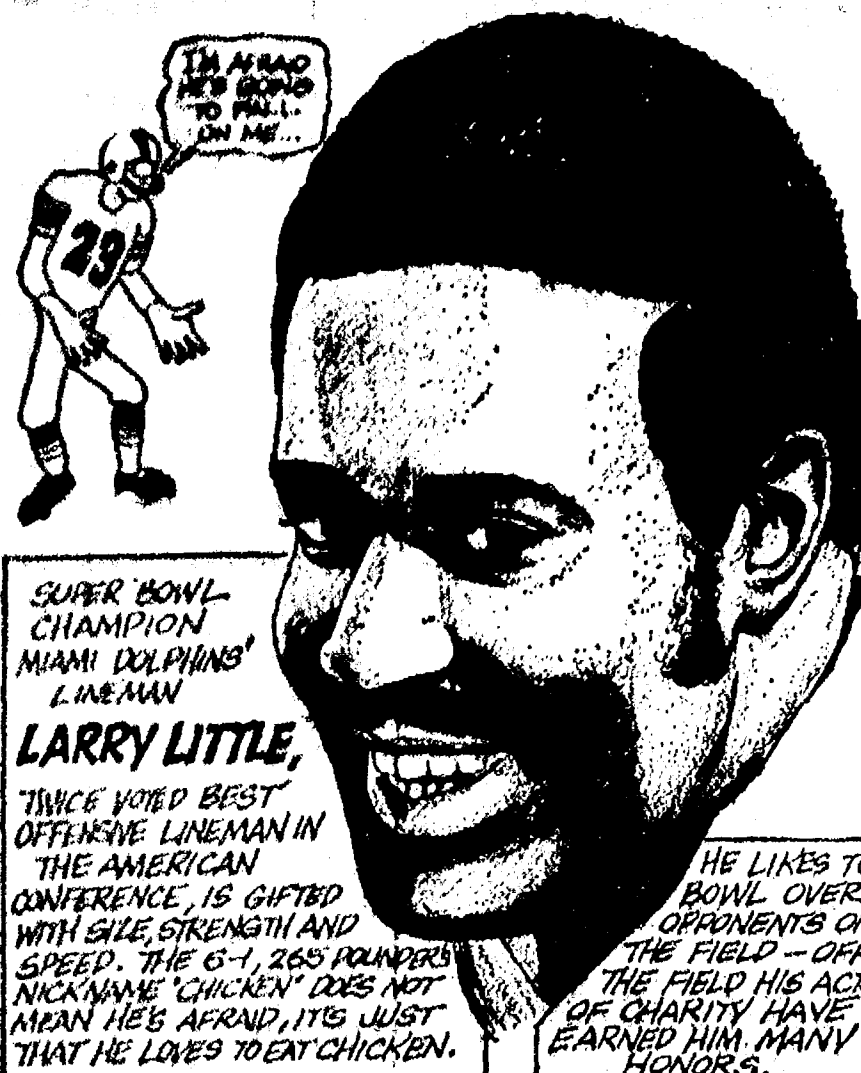
1	Marsh & Verwey	130
2	Marsh & Verwey	128
3	Marsh & Verwey	122
4	Marsh & Verwey	121
5	Marsh & Verwey	119
6	Marsh & Verwey	114
7	Marsh & Verwey	105
8	Marsh & Verwey	104
9	Marsh & Verwey	89
10	Marsh & Verwey	85
11	Marsh & Verwey	81
12	Marsh & Verwey	78

Chelton Lane Mixed

Standings as of Oct. 5

1	Marsh & Verwey	130
2	Marsh & Verwey	128
3	Marsh & Verwey	122
4	Marsh & Verwey	121
5	Marsh & Verwey	119
6	Marsh & Verwey	114
7	Marsh & Verwey	105
8	Marsh & Verwey	104
9	Marsh & Verwey	89
10	Marsh & Verwey	85
11	Marsh & Verwey	81
12	Marsh & Verwey	78

SPORTS CORNER



LARRY LITTLE
TWO-TIME VOTED BEST OFFENSE LINEMAN IN THE AMERICAN CONFERENCE. IS GIFTED WITH SIZE, STRENGTH AND SPEED. THE 6-1, 265 POUNDS KICK-APARTER DOES NOT MEAN HE'S AFRICAN. THAT HE LOVES TO EAT CHICKEN.

Marsh, 172; J. Hoffman, 165; M. Petch, 203; Phil Hoffman, 195; L. Durgan, 143.

Chelton Suburban

Standings as of Oct. 3

1	Chelton Drug	130
2	Dairy Queen	128
3	Klink Excavating	122
4	State Farm	121
5	Waterloo Garage	119
6	Floor Mobil	114
7	Dana Corp.	105
8	Dancer's	104
9	Pittsfield Plastics	89
10	Frisinger Realty	85
11	Chelton State Bank	81
12	Chelton Lanes	78

425 series and over: N. Packard, 593; N. Collins, 587; P. Elliott, 489; P. Harok, 474; M. Paul, 429; G. DeSmith, 431; B. Beeman, 456; M. DeLaTorre, 440; F. Cole, 495; K. Snyder, 434; E. Figg, 480; A. Hocking, 461; J. Stoll, 464; S. Hafner, 445; P. Walz, 461; B. Baczynski, 448; S. Smith, 461; B. Hafley, 454; R. West, 467; R. McGibney, 430; C. Stoffer, 467; S. Bowen, 478; S. Moore, 463; E. Miller, 441.

150 games and over: N. Packard, 170, 189, 234; N. Collins, 244, 153, 190; P. Elliott, 190, 184; E. Miller, 171; S. Ratzlaff, 155; S. Moore, 186; P. Harok, 177, 159; J. Baku, 151; M. Paul, 164, 152; G. DeSmith, 188; B. Beeman, 186; F. Cole, 189, 157; K. Snyder, 151, 164; E. Figg, 165; M. DeLaTorre, 183; B. Hafley, 156, 158; M. Breitenwischer, 164; B. Fike, 163; N. Keizer, 171; R. West, 167, 157; P. Walz, 156; R. McGibney, 168, 158; C. Stoffer, 189, 151; S. Bowen, 156, 174; S. Hafner, 163; E. Whitaker, 152; G. Baczynski, 168; N. Prater, 152.

Junior Swingers

Standings as of Oct. 6

1	Rods II	130
2	Good Guys	128
3	Pin Smokers	122
4	YBA Scorers	121
5	Super Stars	119
6	The Freaks	114
7	Team No. 10	105
8	Hush Puppies	104
9	The Alley Cats	89
10	The Swingers	85

Junior House League

Standings as of Oct. 4

1	Chelton Lanes	130
2	Ann Arbor Bldg. Supply	128
3	Inverness Inn	122
4	Jiffy Mix	121
5	Smith's AAA	119
6	Wolverine No. 1	114
7	3-D Sales & Service	105
8	Dana Demons	104
9	Mark IV	89
10	Boyer Automotive	85
11	Doug's Painting	81
12	Wolverine No. 2	78

525 or over: J. Harok, 531; O. Cavender, 536; L. Hocking, 542; S. Hopkins, 551; L. Hughes, 566; E. Marshall, 552; E. Baku, 527; E. Greenleaf, 596; F. Northrop, 566; D. Clark, 586; R. Schlaff, 527; J. Bergman, 545; J. Ledwidge, 527; R. Toma, 579; A. Fletcher, 585; K. Larson, 528; A. Fleischmann, 530; G. Beeman, 536.

200 games: K. Larson, 225; R. Toma, 203, 213; A. Fletcher, 205; D. Clark, 233; J. Bergman, 200; E. Greenleaf, 223; F. Northrop, 208; L. Hughes, 207; E. Marshall, 211; O. Cavender, 201.

Chelton Women's Bowling Club

Standings as of Oct. 3

1	Parish's Cleaners	130
2	Chelton Lanes	128
3	Arbor Advertising	122
4	Washenaw Engr. Co.	121
5	Chelton Milling	119
6	Thompson's Plaza	114
7	Norris Electric	105
8	United Oil Co.	104
9	Wolverine Lounge	89
10	Jiffy Mixes	85
11	Schneider's Grocery	81
12	Chelton Grinding	78

450 series and over: R. Hummel, 575; J. Koch, 563; D. Alber, 538; D. Anderson, 519; B. Fritz, 514; E. Ward, 512; J. Schleede, 507; J. Hutchinson, 503; G. Kuhl, 499; N. Packard, 497; M. Sutter, 482; A. Eisele, 478; P. Strickland, 478; A. Sindlinger, 475; B. Larson, 472; L. Orlovski, 471; D. Fouty, 464; S. Ringe, 462; R. Lutovsky, 455; T. Kenney, 453; J. Hafner, 453; J. Norris, 452; P. Poertner, 450.

150 games and over: R. Hummel, 150, 235, 190; J. Koch, 167, 163, 203; D. Alber, 201, 185, 152; D. Anderson, 156, 220; B. Fritz, 178, 211; E. Ward, 197, 166; J. Schleede, 200, 159; J. Hutchinson, 189, 156, 187; G. Kuhl, 186, 169; N. Packard, 154, 167, 176; M. Sutter, 188, 173; A. Eisele, 154, 153; P. Strickland, 164, 164; A. Sindlinger, 156, 177; B. Larson, 159, 175; L. Orlovski, 154, 169; D. Fouty, 181; S. Ringe, 171, 158; R. Lutovsky, 196; T. Kenney, 205; J. Hafner, 156, 154; J. Norris, 184; P. Poertner, 151, 178; D. Judson, 151; P. Fitzsimmons, 164; P. Wurster, 170; A. Klinkerbocker, 164, 158; N. Kern, 153; J. Fouty, 158; M. Steele, 160; D. Eisenman, 157; H. Morgan, 155; L. Bradbury, 179; L. Hafner, 151; M. Sallier, 176; N. Mshar, 155; S. Klink, 181.

Sally Ringe picked up the 4-6-7-10 split.

Charlie Brown's Peanut League

Standings as of Oct. 6

1	Super Strikers	130
2	All Stars	128
3	Fire Balls	122
4	Pin Pushers	121
5	Pin Crackers	119
6	Sore Thumbs	114
7	Games 70 and over: T. Greenleaf, 89; R. Krichbaum, 84, 83; J. Rowe, 97, 128; J. Krichbaum, 92; D. Rowe, 74; J. Owings, 95; R. Robeson, 78; K. Thurkow, 70; A. Fletcher, 88, 75; J. Verwey, 85; D. Marsh, 120; M. Petch, 104, 99; P. Hoffman, 99, 96; L. Durgan, 74.	
8	Series 100 and over: T. Greenleaf, 152; R. Krichbaum, 167; J. Rowe, 223; J. Krichbaum, 159; M. Marshall, 102; D. Rowe, 135; J. Owings, 153; R. Robeson, 136; S. Leisinger, 110; D. Alexander, 129; K. Thurkow, 104; D. Darrow, 116; J. Packard, 104; A. Fletcher, 161; M. Bullick, 100; K. Tobin, 138; D. Dettling, 120; J. Verwey, 158; D.	

Chelsea Nite Owl League

Standings as of Oct. 8

1	Steele's Heating	130
2	A. M. Corp.	128
3	Dault & LeVan Bldg.	122
4	Foster's Men's Wear	121
5	S. Boy Take-Out	119
6	Chelton Finance	114
7	Ted's Standard	105
8	Kirby	104
9	Wahl's Oil	89
10	Alber's Orchard	85
11	Sherlock Homes	81
12	Slocum's Const.	78

Old Timers League

Standings as of Oct. 5

1	Nelson Realtors	130
2	Bob & Otto Standard	128
3	Spratt's Marathon	122
4	Hotel Service	121
5	Colonial Lanes	119
6	Conlin Travel	114
7	Team No. 10	105
8	Cloverleaf Lanes	104
9	A.S.C.	89
10	Hartman Ins.	85
11	Edna & Son	81
12	Team No. 11	78

500 and over series: F. Reich, 522; B. Miller, 508; T. Mead, 501; T. Dault, 524; G. Packard, 578; J. Weber, 537; M. Packard, 559; J. Smith, 509; B. Smith, 532; B. Maier, 550; L. Grau, 507; A. Hannewald, 510; C. Staphish, 503; A. Peterson, 570; R. Muzzy, 515; L. McKinnon, 511; M. Ford, 528.

200 and over games: G. Packard, 214; M. Packard, 210; S. Weber, 223; L. Grau, 208; A. Hanningwald, 207; A. Peterson, 205.

WHERE'S WOMEN'S LIF?

According to a tradition of the Africa, when a bride enters her husband's house, she stabs an arrow into her head of antelope horns, symbolizing that she comes as a creature taken in the hunt.

High team game: Sportsman's Tavern, 878.

High team series: Bob & Otto Standard, 2,416.

High ind. game and series: J. Otto, 232, 571.

Other 200 games, 500 series and over: R. Maten, 215; P. Johnson, 205; R. Schneider, 204; J. Zucco, 204; G. Rethmiller, 542; R. Maten, 537; R. Schneider, 537; J. Zucco, 534; H. Stander, 532; G. Lawrence, 529; V. Ruiz, 530; A. Gregory, 518; P. Johnson, 511; R. Robnett, 509; R. Maten, 504; R. Exelby, 504; F. Menerey, 503.

Team won three: Bob & Otto Standard, Hartman Ins., and Edna & Son.

Keeping house to me is like threading beads on a string with no knot on the end.

LARRY'S ROADSIDE MARKET

Farm Fresh Fruits and Vegetables
Bread - Milk - Eggs - Pop

Now Open Every Day!
Monday thru Thursday, 10 am to 7 pm.
Friday, Saturday & Sunday, 10 am to 9 pm.

Halfway Between Chelsea and Manchester on M-52.
1/2 mile south of Grass Lake Rd.

At Village Motor Sales, Inc., Chrysler-Plymouth

Hey, have we got a show for you!

Introducing the new '74 Chryslers.

You want to see what today's luxury car should be? Come on in, and see our new '74 Chryslers. We'll show you richly appointed cars. Cars with electronic ignition. Cars that run on regular gas.

'74 Chrysler New York 4-Door Hardtop

'74 Chrysler Newport 4-Door Sedan

'74 Chrysler Imperial LeBaron 4-Door Hardtop

We'll show you a totally new Imperial, an elegant New Yorker. We'll even show you a luxury car that's surprisingly affordable.

Chrysler Newport. Our big '74 luxury show's got it all. Come on in, this show's for you.

CHRYSLER Plymouth

C'mon in! See our new Chryslers.

VILLAGE MOTOR SALES, INC.

1185 MANCHESTER ROAD CHELSEA, MICHIGAN

Authorized Dealer CHRYSLER MOTOR CORPORATION

CIDAA

1189 M-52 CHELSEA

PHONE 475-8141

1189 M-52 CHELSEA

1189 M-52 CHELSEA

1189 M-52 CHELSEA

1189 M-52 CHELSEA

1189 M-52 CHELSEA

1189 M-52 CHELSEA

1189 M-52 CHELSEA

1189 M-52 CHELSEA

1189 M-52 CHELSEA

1189 M-52 CHELSEA

1189 M-52 CHELSEA

1189 M-52 CHELSEA

1189 M-52 CHELSEA

from HISTORY'S SCRAPBOOK

SALES AND EVENTS FROM YESTERYEARS

Calvin Coolidge elected in the New World on October 15, 1925.
 Betty Crocker and her husband, Walter, founded the Betty Crocker Food Products Co. in Minneapolis, Minn., in 1937.
 The first atomic bomb was dropped on Nagasaki, Japan, on August 9, 1945.
 The first space shuttle, Explorer 1, was launched on November 8, 1958.
 The first moon landing was made by Apollo 11 on July 20, 1969.
 The first AIDS case was reported in 1981.

ROCKCRETE PRODUCTS
 6991 M-32 Phone 475-2848 Manchester

**INTRODUCES THEIR TWO NEW
 RITE-WAY TRANSIT MIXERS**

Compare for Savings Time and Labor with These New Mixers.

**WASHED SAND & STONE
 ROAD GRAVEL - LIMESTONE - TRANSIT MIX**

CALL OR STOP IN
CHELSEA GLASS WORKS

WORKMANSHIP AND MATERIALS FULLY GUARANTEED.
 Open Daily 8 a.m. to 5 p.m.; Sat. 8 a.m. to 1 p.m.

140 W. Middle, Chelsea Phone (313) 475-8667

WE REPAIR AND REPLACE:

- ★ STORE FRONTS
- ★ FURNITURE TOPS
- ★ SHOWER DOORS
- ★ THERMOPANES
- ★ AUTO GLASS - Including Windshields

Free Pick-up and delivery on auto work.

Storm Door & Window Reglazing & Screens
 COMMERCIAL BUILDINGS OR RESIDENTIAL
PROMPT SERVICE REASONABLE PRICES

REAL ESTATE ADVICE
 RESIDENTIAL PROPERTIES
 COMMERCIAL - INDUSTRIAL
 FARMS
 VACANT LANDS

SPEAR & ASSOCIATES, INC.
 REALTORS

122 W. Main, Manchester Ph. 428-8388

**NORTH ELEMENTARY
 SCHOOL NOTES**

KINDERGARTEN—
 Teachers: Mrs. Nicholson
 Reporters: All the children

We are collecting beautiful leaves and ironing them between wax paper. We have a lot of plants and animals on our nature table and are collecting more.

Some trees have leaves with different shapes on the same tree. Nearly all of us know shapes and nearly all of us know colors. Some children have to practice cutting and hold scissors a better way. We can roller skate - some of us.

Miss Pulsipher, our Learning Disability Consultant, came in to play Duso games with us. They help us learn about getting along with others.

Marilyn King is the high school assistant in kindergarten and has been very helpful to all of us. Miss Pulsipher and Mrs. Conlin work together to find interested people to work with us.

Mrs. Lang has been in to see us. She is the speech teacher. Mrs. Dye sees us once every week and Mr. Wehrwein does too.

We counted fire hydrants on the way to the fire station this week. Someone saw 10. Chief Gaken told us all about fire station, the trucks and the clothes and the kitchen. Mr. Smith and Mr. Adams let us hear the siren and squirt the big hose. Fire prevention week is now. The Walt Disney film we saw showed us how to get out of a house in case of fire. We have to figure out how to get out of our own houses in case of fire. Don't play with matches.

Mike Connors, Brian Smith, Le-on Walworth, Mark Bulick, fourth grade boys came to our room and showed a play about the Three Pigs. We knew the story so the play was fun to see. We had some visitors come from Mr. Torpstra's high school psychology class too.

FIRST GRADE—
 Our North School kindergarten teacher was "promoted" this year, so our three first grade teachers are: Mrs. Beverly Peebles, Mrs. Bernice Packard and Mrs. Brtha Stein. Last year's teacher, Mrs. White is now a mother of a 9-lb. baby boy, Brian Joseph.

September birthdays were: Patricia Hoffman, Teresa Carlson, Kimberly Cooper, Marie Kapolka, Tony Bassett, Tammy Schanz and Peggy Seyfried. October birthdays are: Brian Ackley, Shaunda Carpenter, Jason Heller, Andrew Martin, Shelley Neely, Geri Minton, David Cox, Michael Carignan and Martin Fletcher.

Mr. Coelius' speech class has members coming to our rooms and reading stories to the children. Have you heard about "Quiet, There's a Canary in the Library" or "The Bus Ride"? These are the beginning stories in our new Scott, Foresman Reading System. Through our Learning Disabilities Consultant, Susan Pulsipher we have students from the high school helping us in the classroom and getting some job training experience themselves.

October will be busy with a nature walk and study of fall, making appessauce, a unit about the family, Simple Machines in Science and of course our Halloween party.

SECOND GRADE—
 We have 23 children in our room now. Troy Branham has moved to Whitmore Lake.

We had a nice summer vacation but we were happy to get back to school. We are learning about vowels in reading. In math, we are working with addends and sums. We are talking about ways of traveling. Jimmie Heydlauff and Mark Porath had September birthdays. Mark received some puppies for his birthday. Sheila Briggs brought in some nice cat-tails for our room. Lavonne Kruse showed us a helpful insect—a praying mantis. Mary Beth O'Quinn brought in some polished stones. Sandra Young had a good specimen of a Potoskey Stone. Tony Bentley has a new dog named Bozo. Dean DeVoe's dog had six puppies.

Teacher: Mrs. Stuermer
 Two in our class have had birthdays since school started. They

are Stevie Fleischmann and Ricky Cook.

Betsy Galtbalth brought a walking stick for us to see. We have also had a praying mantis and a woolly bear caterpillar. Tom Hunge brought a kitten to visit. Billy Milkey brought a nice story record to share. It had "Oinks are for Pigs", "Lick a Pickle" and several other stories which we enjoyed.

Teacher: Mrs. Walton
 We are still trying to get used to our new schedule—it is different every day. We even had a surprise fire drill.

Only two people had birthdays in September: Bruce C. and Mrs. Walton. We really are working hard this year. Lots of math, spelling words to learn, and so much printing.

We saw a good movie called Everyone in the Community Helps. We really enjoy art and music in the "new" room.

We studied about America Indians for a week. We had a lot of Indian things on our display table. Tom, Debbie, Hallie, Linda, Ronnie, Carla, David, Bruce and Tracy all brought Indian things in to show us.

LIBRARY—
 Mrs. McClear, Librarian

Many new books are appearing on the shelves in the North School Library but still in demand are the old favorites—The Boxcar Children, Charlie and the Chocolate Factory, Charlotte's Web and the Charlie Brown books.

Everyone is enjoying the new paper backs, a gift last spring from Mrs. Crouch's fifth grade class.

During the summer three new bookshelves were added to the Library. Our thanks to the maintenance men who built them for us.

WATCH THOSE PEDESTRAINS
 It's getting so a pedestrian isn't safe unless he's hiding in a car—and even that isn't safe anymore.

BECKER MEMORIALS
 6033 Jackson Road
 ANN ARBOR, MICHIGAN

MAUSOLEUMS ★ MONUMENTS
 BRONZE TABLETS ★ MARKERS

LOW MAN!
 Meet me on page 10.

October Specials!
L & R RESTAURANT
 PHONE 426-8668
 11485 NORTH TERRITORIAL ROAD

THURSDAY - 5 to 9 p.m.
SPAGHETTI DINNER
 All You Can Eat - \$1.85 per person

FRIDAY - 5 to 9 p.m.
OCEAN PERCH DINNER
 All the perch you can eat
 \$2.10 per person

In addition to our regular menu we are now serving our own
HOME-MADE PIZZAS After 5 p.m.

**NEW HOURS: Sun., Tues., Wed., 11-9;
 Thurs., Fri., Sat., 11-11. Closed Mondays**

Tell People You Read It in The Standard!

FOR PROFIT

FEED!

Feed Formulas Tested, Proved To Get Results
 Extra proteins, vitamins and minerals in proper balance, scientifically blended, make our feeds real profit producers for you.

Farmers' Supply Co.
 Phone GR 5-5511

THE KIWANIS CLUB OF CHELSEA PROUDLY PRESENTS
A TRULY OUTSTANDING
TRAVEL & ADVENTURE SERIES
6 FULL COLOR FILMS NARRATED IN PERSON
BY THESE NATIONALLY-KNOWN ADVENTURES:

<p>Saturday, October 20</p> <p>★ JULIAN GROMER 'Wheels Across Europe'</p>	<p>SEASON TICKETS \$7.00</p> <p>TICKETS NOW ON SALE</p> <p>TICKETS AVAILABLE AT</p> <p>Foster's Men's Wear Kusterer's Food Market Chelsea Lumber - Chelsea State Bank Gamble's - Palmer Motor Sales Wallace Wood Insurance - Western Auto</p>	<p>Saturday, February 16</p> <p>★ DON COOPER 'The Canadian Far West'</p>
<p>Saturday, November 17</p> <p>★ ROBERT BROUWER 'America - of Thee I Sing'</p>		<p>Saturday, March 16</p> <p>★ CURTIS NAGEL 'Portraits of Australia'</p>
<p>Saturday, January 12</p> <p>★ JAMES METCALF 'Angola - A Different Africa'</p>		<p>Saturday, April 27</p> <p>★ JOE ADAIR 'Grecian Odyssey'</p>

PLACE: Chelsea High Auditorium
TIME: 8:00 P.M. Sharp
PROCEEDS: To Local Area Kiwanis Projects

Including Youth and Community Activities, Halloween Party, Kids Fair Parade and prizes, Interlochen scholarships, Wolverine Boys State scholarships, 3 Boy Scout troops, July 4th Fireworks, Athletic Field lighting, drug abuse education material.

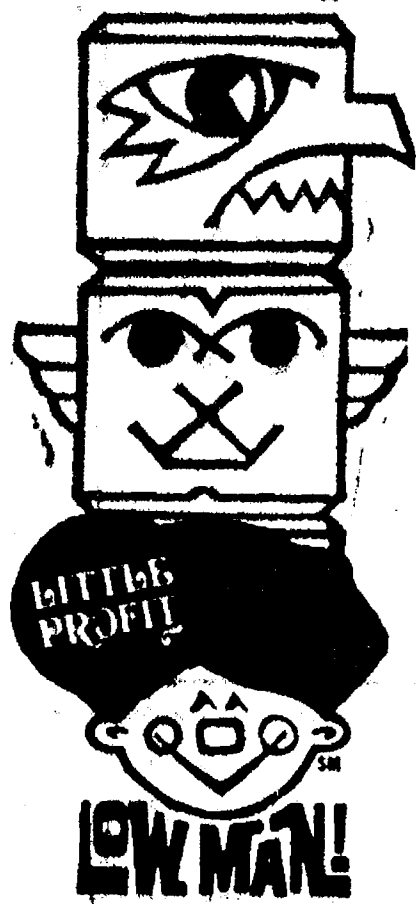
**Kiwanis Expects an Early Sell-out
 For This EXCEPTIONAL Series
 BUY YOUR TICKETS SOON!**

+ Services in Our Churches +

FIRST UNITED METHODIST CHURCH
The Rev. Dave Dickins, Pastor
Thursday, Oct. 11—
9:00 a.m.—United Methodist Women Educational Committee at home of Mrs. James (Carol)
9:30 p.m.—Administrative Board at the Educational Unit.
Sunday, Oct. 14—
9:00 a.m.—Church school, nursery through adult.
10:00 a.m.—Worship service.
11:30 a.m.—Memorial Committee.
Tuesday, Oct. 16—
1:00 p.m.—Prayer study group at home of Mrs. Paul Weber.
Guided at home of Mrs. George West.
Wednesday, Oct. 17—
9:00 a.m.—Sarah Circle at home of Mrs. Thomas Morrison.
12:30 p.m.—Phoebe Circle at home of Mrs. Mary Clark for poor back harvest.
Thursday, Oct. 18—
9:00 a.m.—Elizabeth Circle at home of Mrs. Charles Schmunk.
7:30 p.m.—United Methodist Women to the North.

ST. THOMAS EVANGELICAL LUTHERAN
Elmhurst and Haab Rds.
The Rev. Daniel L. Mattson, Pastor
Thursday, Oct. 11—
8:00 p.m.—Choir rehearsal.
Sunday, Oct. 14—
10:00 a.m.—Worship service.
11:00 a.m.—Sunday school and Bible class.
3:00 p.m.—Sunday school sup. at Chelsea.
Wednesday, Oct. 17—
10:00 a.m.—Ladies Bible study.

SALEM GROVE UNITED METHODIST CHURCH
3330 Nottan Rd.
The Rev. J. William Todd, Pastor
Every Sunday—
10:00 a.m.—Sunday school.
11:00 a.m.—Worship service.



Meet me on page 10.

ST. PAUL UNITED CHURCH OF CHRIST
The Rev. Warner Siebert, Pastor
Saturday, Oct. 13—
9:00 a.m.—JUV Confirmation.
10:30 a.m.—Junior High Choir.
Sunday, Oct. 14—
9:00 a.m.—Church school.
10:30 a.m.—Worship (Laiti Sunday).
7:30 p.m.—Christian Concerns.
Monday, Oct. 15—
7:30 p.m.—Church school teachers.
Tuesday, Oct. 16—
1:00 p.m.—Needle and Thread.
7:30 p.m.—Council.
Wednesday, Oct. 17—
1:00 p.m.—World Wide.
3:30 p.m.—Junior Choir.
8:00 p.m.—Prayer Group.
8:15 p.m.—Chancel Choir.

OUR SAVIOUR LUTHERAN CHURCH
The Rev. William H. Keller, Pastor
1815 S. Main, Chelsea
Each Sunday—
9:00 a.m.—Sunday school.
10:30 a.m.—Worship service.

ST. MARY CATHOLIC CHURCH
Pastor
The Rev. Fr. David Philip Dupuis
Mass Schedule
Every Saturday—
4:00-5:00 p.m.—Confessions.
7:00 p.m.—Mass.
Immediately after 7 p.m. Mass—
Confession.
Every Sunday—
Winter schedule.
8:00, 10:00, 12:00 noon—Mass.
Summer schedule.
7:00, 9:00, 11:00 a.m.—Mass.

ST. BARNABAS EPISCOPAL CHURCH
2050 Old US-12
The Rev. C. Walton Fitch, Vicar
Telephone 426-8815
The Rev. J. F. Beaumont, B.S.P.
Every Sunday—
9:15 a.m.—Holy Communion, first, third and fifth Sundays.
9:15 a.m.—Morning Prayer, second and fourth Sundays.
9:30 a.m.—Sunday school.
10:15 a.m.—Choir rehearsal.
Every Thursday—
7:30 p.m.—Holy Eucharist.

CHURCH OF CHRIST
13801 Old US-12, East
David A. Rushlow
Every Sunday—
10:00 a.m.—Church school.
11:00 a.m.—Worship service.
Nursery will be available.
6:00 p.m.—Worship service.
Every Wednesday—
7:30 p.m.—Bible Study.

LOSE UGLY FAT OR PAY NOTHING
Start losing weight today OR MONEY BACK. MONADEK is a tiny tablet that will help curb your desire for excess food. Eat less—weigh less. Contains no dangerous drugs and will not make you nervous. No strenuous exercise. Change your life... start today. MONADEK costs \$3.00 for a 20 day supply and \$5.00 for twice the amount. Lose ugly fat or your money will be refunded with no questions asked by:
Chelsea - Mail Orders Filled
CHELSEA DRUG STORE

CONGREGATIONAL CHURCH
(United Church of Christ)
The Rev. Carl Schwarm, Pastor
Sunday, Oct. 14—
10:00 a.m.—Sunday school.
11:00 a.m.—Worship service.
Wednesday, Oct. 17—
7:30 p.m.—Deacons.
8:00 p.m.—Church Council.

ZION LUTHERAN CHURCH
Corner of Fletcher, Waters Rds.
(Rogers Corners)
The Rev. John R. Morris, Pastor
October is Key '73 survey and Bible distribution month.
Saturday, Oct. 13—
9:00 a.m.—Ninth grade YI.
10:00 a.m.—Seventh grade YI.
Sunday, Oct. 14—
9:00 a.m.—Sunday school.
10:15 a.m.—Worship.
3:00 - 6:00 p.m.—Sunday School workshop.
7:30 p.m.—Adult Fellowship at Warren Meyer home.
7:00 p.m.—Luther League at Doug Schoenberg home.
Monday, Oct. 15—
7:00 p.m.—Junior Choir.
8:00 p.m.—Senior Choir.
Wednesday, Oct. 17—
8:00 p.m.—Church Council at Earl Hornung home.
4:00 p.m.—Eighth grade YI.

ST. JOHN'S EVANGELICAL AND REFORMED CHURCH
(United Church of Christ)
Francisco
The Rev. J. P. Goebel, Interim Pastor
Every Sunday—
9:30 a.m.—Sunday school until 10:30 a.m. Confirmation classes, seventh graders and up. Children's Choir Practice. Adult Bible Study.
10:30 a.m.—Worship service until 11:30 a.m. Nursery available for pre-schoolers during worship service.

BETHEL EVANGELICAL AND REFORMED CHURCH
(United Church of Christ)
Freedom Township
The Rev. Roman A. Reineck
Every Sunday—
10:00 a.m.—Worship.

BAHA'I FIRESIDE
Every Thursday—
8:00 p.m.—At the home of Toby Peterson, 705 S. Main St. Anyone wishing to learn about the Baha'i faith is welcome.

NORTH LAKE UNITED METHODIST CHURCH
The Rev. J. William Todd, Pastor
Every Sunday—
9:30 a.m.—Worship service.
10:30 a.m.—Sunday school.
Every Tuesday—
7:00 p.m.—Choir rehearsal.
Every Thursday—
4:00 p.m.—Children's Choir rehearsal.
11:15 a.m.—Morning worship.

FIRST UNITED PRESBYTERIAN CHURCH
Unadilla
The Rev. T.H. Liang
Every Sunday—
9:45 a.m.—Sunday school.
11:00 a.m.—Worship service.

WATERLOO FIRST UNITED METHODIST
Parks and Territorial Rds.
The Rev. Altha Barnes, Pastor
Every Sunday—
9:15 a.m.—Morning worship.

IMMANUEL BIBLE CHURCH
145 E. Summit St.
The Rev. LeRoy Johnson, Pastor
Every Sunday—
9:45 a.m.—Sunday school, nursery provided.
11:00 a.m.—Morning worship, nursery provided.
Every Wednesday—
7:30 p.m.—Family hour, prayer meeting and Bible study.
First Sunday of Month—
7:00 p.m.—Communion service.
10:00 a.m.—Sunday school.

ST. JACOB EVANGELICAL LUTHERAN CHURCH
12501 Rietmiller Rd., Grass Lake
The Rev. Andrew Bloom, Pastor
Every Sunday—
9:00 a.m.—Worship service.
10:15 a.m.—Livine services.

Mobil-Toons By GLENN



"I had no idea air-conditioning was so easy to install!"
You have no idea how hard we try to please!

GLENN'S MOBIL SERVICE
1629 M-52 & I-94
CHELSEA, MICHIGAN
Phone 475-1767
GLENN HEIM PROP.

St. Louis School Notes

Last Wednesday the boys celebrated Miss Lenox's birthday (Mrs. Kimball) by presenting a skit for her of her wedding. They also played games and had refreshment of cake, ice cream, and pop. Miss Lenox opened her gifts and Mrs. Fryback took pictures of the gathering.

Last Saturday, the boys attended another Michigan football game and saw the Wolverines dump Oregon. Tickets were donated by

METHODIST HOME CHAPEL
The Rev. R. L. Clemans, Chaplain
Every Sunday—
8:45 a.m.—Worship service.

NORTH SHARON COMMUNITY BIBLE CHURCH
Sylvan and Washburn Rds.
The Rev. William Enslin, Pastor
Every Sunday—
10:00 a.m.—Sunday school.
(Nursery will be available.) Junior church classes.
11:00 a.m.—Worship service.
6:00 p.m.—Senior High Youth meeting. Youth Choir.
7:00 p.m.—Evening worship service. (Nursery available.)
Every Wednesday—
7:00 p.m.—Bible study and prayer meeting. (Nursery available.)
Bus transportation available: 428-7222.

GREGORY BAPTIST CHURCH
The Rev. Grant Lapham, Pastor
Every Sunday—
10:00 a.m.—Worship.
10:30 a.m.—Sunday school.
7:30 p.m.—Evening worship service.

FIRST CHURCH OF CHRIST, SCIENTIST
1883 Washtenaw Ave., Ann Arbor
Every Sunday—
10:30 a.m.—Sunday school; morning service.

CHELSEA MEDICAL CENTER
Every Other Wednesday—
1:30 p.m.—Worship service.

the Boy Scouts, of Chelsea under the direction of David Bober.

Sunday afternoon the group was the guest of the Ann Arbor Eastern and Western Kiwanis Clubs at the Marine Band Concert at Pioneer High school.

Wednesday the older boys traveled to the Detroit Science Center to view a number of exhibits, including magnification and star formations.

The dental decay prevention study sponsored by the University of Michigan is being conducted at the school under the direction of Michael Razzoog, DDS.

Every other Sunday, a group of seminarians from the Pine Missionary come for a social hour in the afternoon, during which they visit and play with the boys.

The boys will go home tomorrow and return Sunday.

Nearly a million veterans won't see dividends from their National Service Life insurance policies in 1973 because they instructed the Veterans Administration to use them to buy additional paidup coverage.

TWO SIDES?
He who knows only his own side of the case knows little of that.

APPLES

Kentner's Apple House

2211 Soke Rd.

DEXTER
683-2147

NORTHERN SPY

Excellent Cooking & Eating

2 Miles East of Dexter — Off Ann Arbor Rd.

Bring Adv. - Worth \$1 Off on Bushel

Want to sell a car? Try a Standard Want Ad!

HIGHEST REGULAR PASSBOOK SAVINGS INTEREST

5 1/4%
PER ANNUM
EFFECTIVE ANNUAL RATE 5.35%

DAILY INTEREST

NO MINIMUM DEPOSIT—WITHDRAW ANYTIME!

This is the highest paying Passbook Savings Account in Michigan . . . 5 1/4% compounded and paid quarterly with an effective annual rate of 5.35% when interest is allowed to accumulate. Money placed in this account earns interest from the day of deposit to the day of withdrawal, so it represents a reserve that you can draw from for emergencies anytime, and earn the full 5 1/4% up until the day of withdrawal. It provides your family with greater flexibility than other forms of investment and at the same time, a solid return on your dollars. For your long term investment dollars check into our high interest paying Passbook Certificate Accounts.

ANN ARBOR RAFFS FEDERAL SAVINGS

the savings and loan specialists

ANN ARBOR OFFICES: Downtown, Liberty Division; Westside, Paulina at Stadium; Eastside, Huron Parkway at Platt; Northside, Plymouth at Nixon; CHELSEA, Main St. near Old US-12.
DEXTER - 8081 Main Street.
Member: Federal Home Loan Bank System - Federal Savings and Loan Insurance Corporation

FURNITURE

AUCTION

As the house has been sold and we are moving into a mobile home, a public auction will be held, located at 527 W. Middle St., Village of Chelsea

Friday, October 12

Commencing at 12:30 p.m.

Phone Stockbridge (517) 851-8042 **PRICE BROTHERS AUCTIONEERS** Phone Stockbridge (517) 851-8042

Modern Furniture - Boat - Bottle Collection

Whirlpool copertone 16-cu. ft. refrigerator with top freezer.
Whirlpool copertone 30-in. self cleaning electric stove.
Whirlpool copertone automatic dryer.
Whirlpool copertone automatic washer.
Whirlpool copertone automatic dishwasher.
Magnavox 21-in. color TV with stereo home center, nice.
Mediterranean naugahyde sofa, new.
3-piece Mediterranean bedroom suite consisting of queen size bed, double dresser and mirror, and 2-door chest of drawers, 3 months old.
Naugahyde swivel rocker, nearly new.
Mediterranean 5-ft. coffee table.
Mediterranean hexagon table, new.
Mediterranean end tables.
Pine gun cabinet.
Mediterranean dining table and 4 matching chairs.
2 red base step table lamps.
Double bed.
French provincial canopy bed, complete, real nice.
Maple dining hutch.
Antique wash stand.
Polywood child's organ & bench.
5 drawer chest of drawers.
Antique mirror with coat hooks.
3 drawer chest.
Large white metal cabinet.
6x5 wall tapestry.
4 oval braided rugs.
Nice Clean Sale to attend. Most of the above furniture is nearly new.

Black child's rocker.
Duo-Therm space heater.
Old trunk.
Floor fan.
C-B base station radio and antenna.
Airline tape recorder, new.
Coleman camp stove, new.
Child's picnic table.
Floor rugs.
Coleman lantern.
Quantity Avon bottles.
Antique glassware.
Some dishes.
22 automatic rifle.
Covered wagon electric clock.
2 child's sleds.
Hand truck.
2 maple single beds.
Mechanic's tool chest.
Quantity good hand tools.
Electric drills.
Parts cabinet.
Four 8.45x15 tires, new.
Other tires.
Metal shelving.
24 qts. new motor oil.
7 ft. front mount snow blade, good.
Stallion 7-h.p. lawn tractor.
A large amount of nice small items to be sold.

BOTTLE COLLECTION
Quantity Jim Beam bottles consisting of states, executive series, souvenir bottles. This is a real nice collection to be sold.

BOAT - TRAILER
12-ft. aluminum boat.
6-h.p. outboard motor.
Sea King boat trailer.
1956 Thunderbird coupe, good condition.

LUNCH ON GROUNDS
is nearly new.

TERMS: Cash. Not responsible for accidents or items after sold. LUNCH ON THE GROUNDS.

Mr. & Mrs. Jim Sweeney
OWNERS

